

Missionary Activities and East-Asian Collections



PAGODE – Europeana China is
co-financed by the Connecting
Europe Facility Programme, GA
n. INEA/CEF/ICT/A2019/1931839

Slovenian missionary activities in China: Peter Baptist Turk Collection in the Slovene Ethnographic Museum

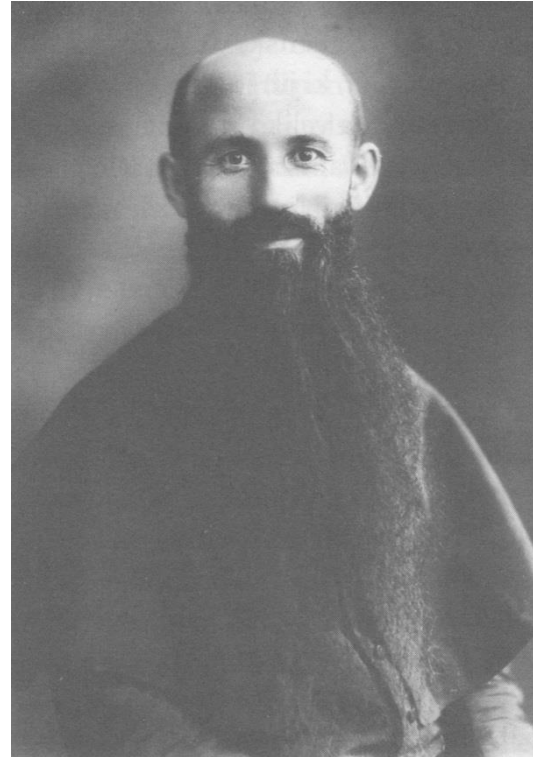
Nataša Vampelj Suhadolnik

Department of Asian Studies, University of Ljubljana

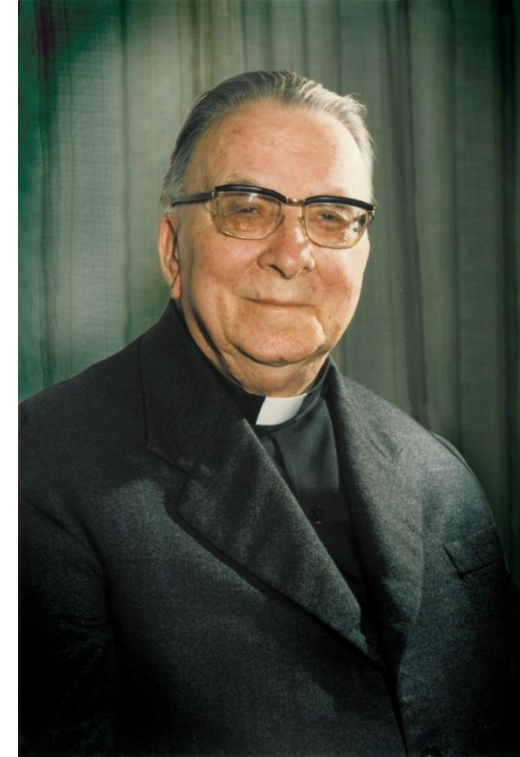
20 May, 2021



Peter Baptist Turk (1874–1944)



Jožef Kerec (1892–1974)



Andrej Majcen (1904–1999)

Missionaries



PAGODE – Europeana China is co-financed by the Connecting Europe Facility Programme, GA n. INEA/CEF/ICT/A2019/1931839



Slovene Ethnographic Museum



Salesians` Museum in Rakovnik

**FERDINAND AUGUSTIN
HALLERSTEIN
(1703–1774)
LIU SONGLING 劉松齡**



PAGODE – Europeana China is co-financed by the Connecting Europe Facility Programme, GA n. INEA/CEF/ICT/A2019/1931839

The House of the Hallerstein family, Ravbar Castle, Mengeš, near Ljubljana (now Mengeš Museum)

- Head of the Imperial Board of Astronomy from 1746 till 1774
- a classical astronomical treatise, *Lingtai yixiang zhi (Treatise on Imperial Observatory Instruments)*
- the terrestrial and celestial globes
- a new equatorial armillary sphere (*Jihengfuchenyi*)





PAGODE – Europeana China is co-financed by the Connecting Europe Facility Programme, GA n. INEA/CEF/ICT/A2019/1931839

New equatorial armillary sphere, Old observatory, Beijing

PETER BAPTIST TURK (1874–1944)



PAGODE – Europeana China is co-financed by the Connecting Europe Facility Programme, GA n. INEA/CEF/ICT/A2019/1931839

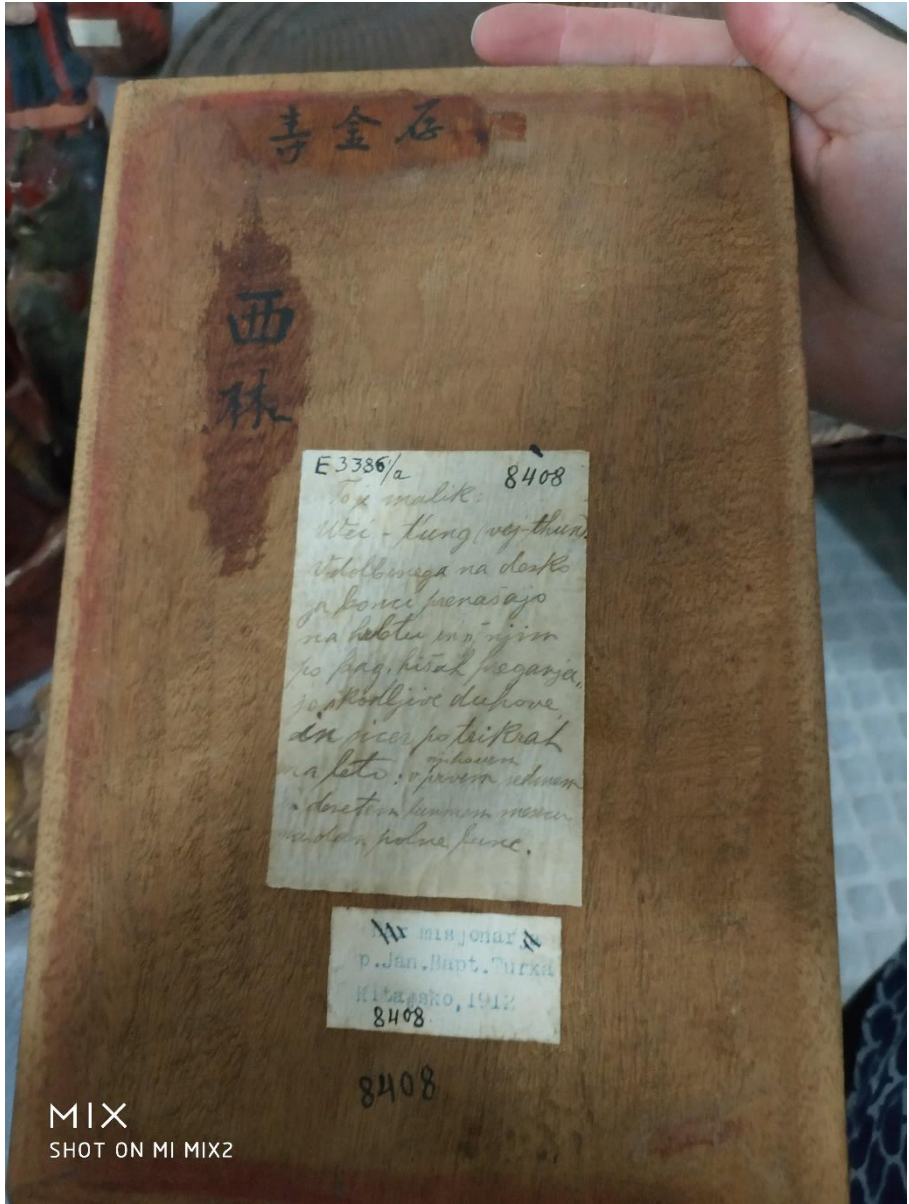


Hankow (Wuhan), around 1900, Ivan Koršič Postcard Collection, Sergej Mašera Maritime Museum, Piran.

Peter Baptist Turk, photo around 1900, unknown photographer, library of Theological Faculty in Ljubljana



Provincial Museum of Carniola received various religious objects in 1912/13 from Peter Baptist Turk



MIX
SHOT ON MI MIX2



MIX
SHOT ON MI MIX2

Labels on the back and base of the statues,
Collection of Peter Baptist Turk,
Slovene Ethnographic Museum



PAGODE – Europeana China is co-financed by the Connecting Europe Facility Programme, GA n. INEA/CEF/ICT/A2019/1931839

Various religious objects, Collection of Peter Baptist Turk, Slovene Ethnographic Museum





PAGODE – Europeana China is co-financed by the Connecting Europe Facility Programme, GA n. INEA/CEF/ICT/A2019/1931839

Buddha Shakyamuni, Collection of Peter Baptist Turk,
Slovene Ethnographic Museum



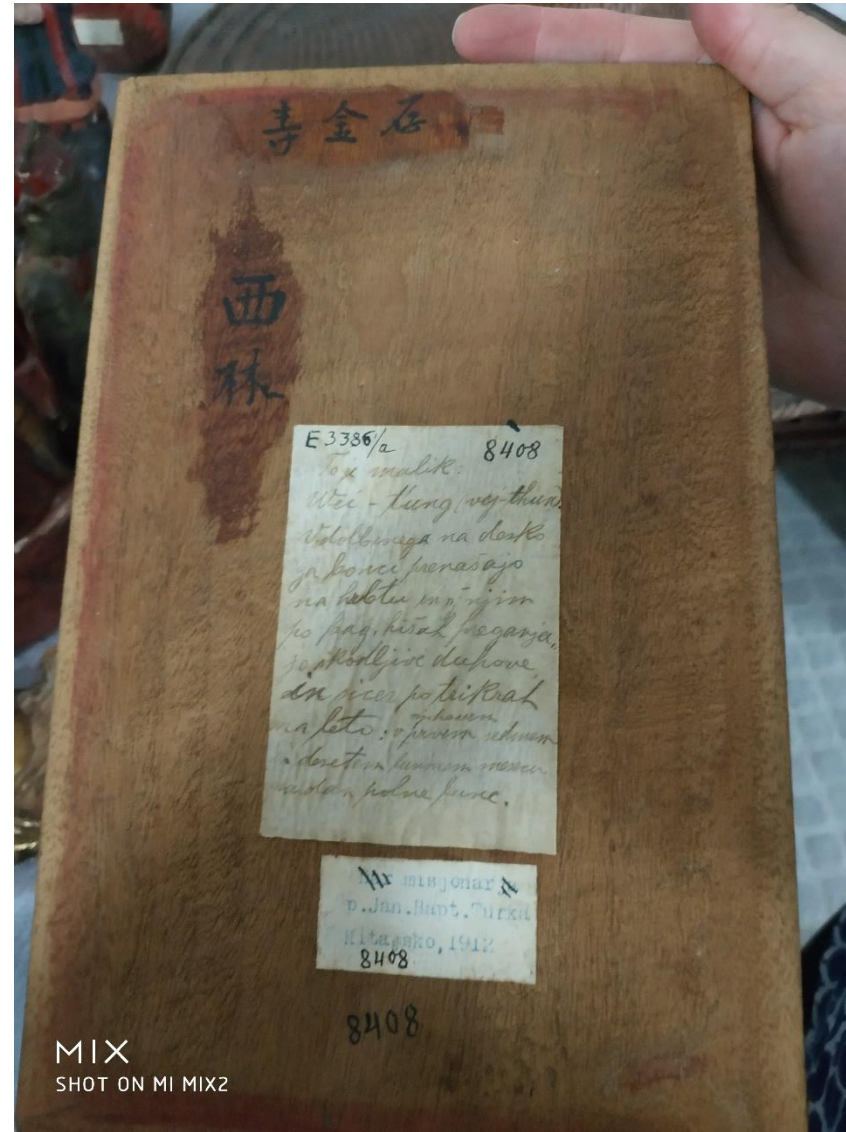
Collection of Peter Baptist Turk,
Slovene Ethnographic Museum



PAGODE – Europeana China is co-financed by the Connecting Europe Facility Programme, GA n. INEA/CEF/ICT/A2019/1931839



MIX
SHOT ON MI MIX2



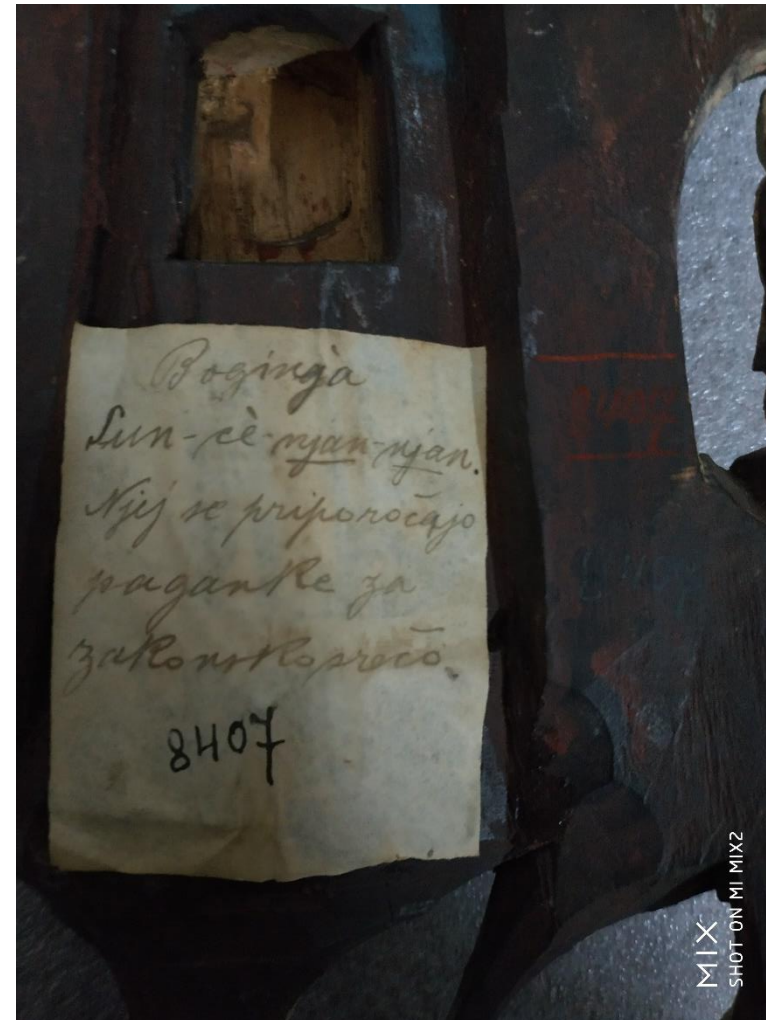
MIX
SHOT ON MI MIX2



PAGODE – Europeana China is co-financed by the Connecting Europe Facility Programme, GA n. INEA/CEF/ICT/A2019/1931839



MIX
SHOT ON MI MIX2



MIX
SHOT ON MI MIX2



PAGODE – Europeana China is co-financed by the Connecting Europe Facility Programme, GA n. INEA/CEF/ICT/A2019/1931839

Collection of Peter Baptist Turk, Slovene Ethnographic Museum



PAGODE – Europeana China is co-financed by the Connecting Europe Facility Programme, GA n. INEA/CEF/ICT/A2019/1931839

Collection of Peter Baptist Turk,
Slovene Ethnographic Museum



Contact



PAGODE – Europeana China is co-financed by the Connecting Europe Facility Programme, GA n. INEA/CEF/ICT/A2019/1931839

Nataša Vampelj Suhadolnik

Natasa.vampeljsuhadolnik@ff.uni-lj.si

Department of Asian Studies, Faculty of Arts, University of Ljubljana

<http://as.ff.uni-lj.si/english/english>

www.ff.uni-lj.si