



PAGODE – Europeana China is co-financed by the Connecting Europe Facility Programme, GA n. INEA/CEF/ICT/A2019/1931839

Activity 3 Content Curation and Digitisation

PAGODE General Assembly, 26 January 2021

Nataša Vampelj Suhadolnik

Department of Asian Studies, Faculty of Arts,

University of Ljubljana



Official Media Partner
DIGITAL CULTURE
www.digitalmeetsculture.net

Semantic background



PAGODE – Europeana China is co-financed by the Connecting Europe Facility Programme, GA n. INEA/CEF/ICT/A2019/1931839

1. The definition or the conceptual scheme of what constitutes Chinese CH in Europe was formulated
2. Keyword lists of metadata specifications

„China“ search results on EUROPEANA sorted by collection



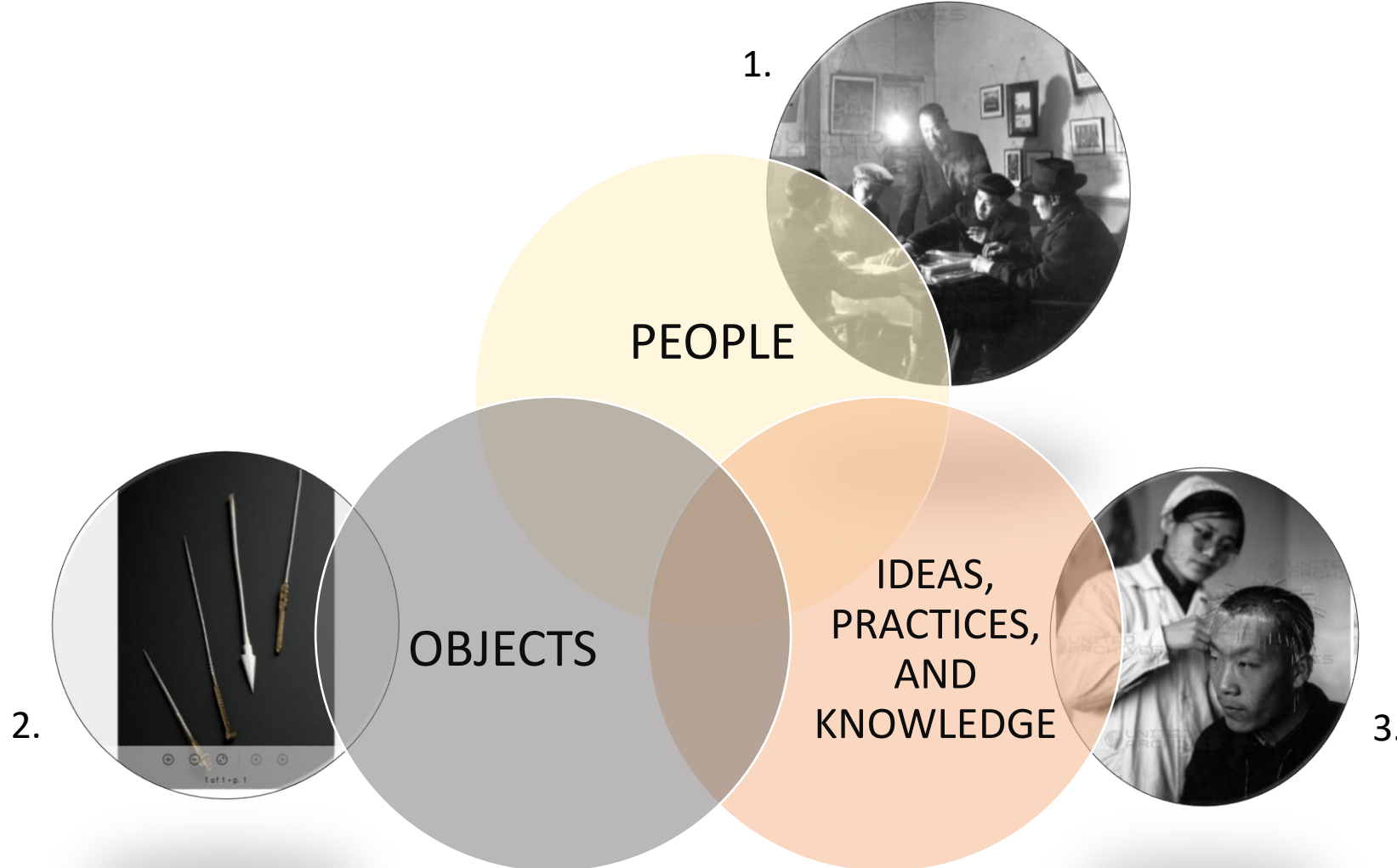
| Name | Results | On type of file and content |
|---------------------|---------|---|
| Newspapers | 187.076 | Good insight into public and political thought and affairs regarding China; includes Archology collection's entry on gardens |
| Natural History | 51.312 | 90% image, also texts and one sound file USA: primary literature on the topic of natural sciences Italy: images of plants in gardens |
| Art | 24.369 | mostly images 90%, mostly of porcelain and ceramic objects (also metal objects), less than 1/3 images of paintings, last few pages dedicated to modern Chinese political posters, includes also some material from "Archology" |
| Photography | 9.525 | includes also items from "Archology" and "Architecture" |
| Archaeology | 4.248 | except 1 video all images; mostly images of artefacts; 2nd place architectural designs and plans (Spain); 3rd herbariums, China room, gardens (images, Netherlands); 4th: mostly herbariums (UK, 58 items) |
| Music | 3.080 | mostly texts (>2000); Hungary: Open Society Archives at Central European University – Mostly Free Europe Radio Broadcasts on „Red China“ and „Communist China“, otherwise images of music instruments; France gave a lot of sound recordings from the field (anthropology) |
| Migration | 743 | mostly texts, also images; overlaps with Hungarian and Holland's Music collection ; UK: a lot of photo material of modern China towns, refugees from China; books written by Chinese migrants in EU |
| Fashion | 636 | mostly images |
| Manuscripts | 584 | 3/4 images, 1/4 text |
| Industrial Heritage | 381 | mostly images; overlapping with "Fashion" (fabric and accessories) |
| Sport | 183 | 95% of images, also 4 texts and 4 3D |
| Maps and Geography | 175 | mostly images, also texts |
| 1914-1918 | 53 | includes china/porcelain with EU origin |

PAGODE – Europeana China is co-financed by the Connecting Europe Facility Programme, GA n. INEA/CEF/ICT/A2019/1931839

Semantic Definition – What is „on the move“?



PAGODE – Europeana China is co-financed by the Connecting Europe Facility Programme, GA n. INEA/CEF/ICT/A2019/1931839



1. Playing Mah-Jong at Chinese Seaman's Hostel, Pennyfields (London's Chinese Quarter in Dockland). 11th February 1947, United Archives/TopFotoRHR
2. Acupuncture needle, China, 1701-1900, Welcome Collection
3. Acupuncture at the Tseng I Yen Hospital of Traditional Medicine in Beijing, United Archives/TopFotoRHR

Semantic background



1. The definition or the conceptual scheme of what constitutes Chinese CH in Europe was formulated.
2. Keyword lists of metadata specifications:
 - long keyword list for automatic enrichment
 - several shorter lists for manual annotations/mapping

„China“ search results on EUROPEANA sorted by collection



PAGODE – Europeana China is co-financed by the Connecting Europe Facility Programme, GA n. INEA/CEF/ICT/A2019/1931839

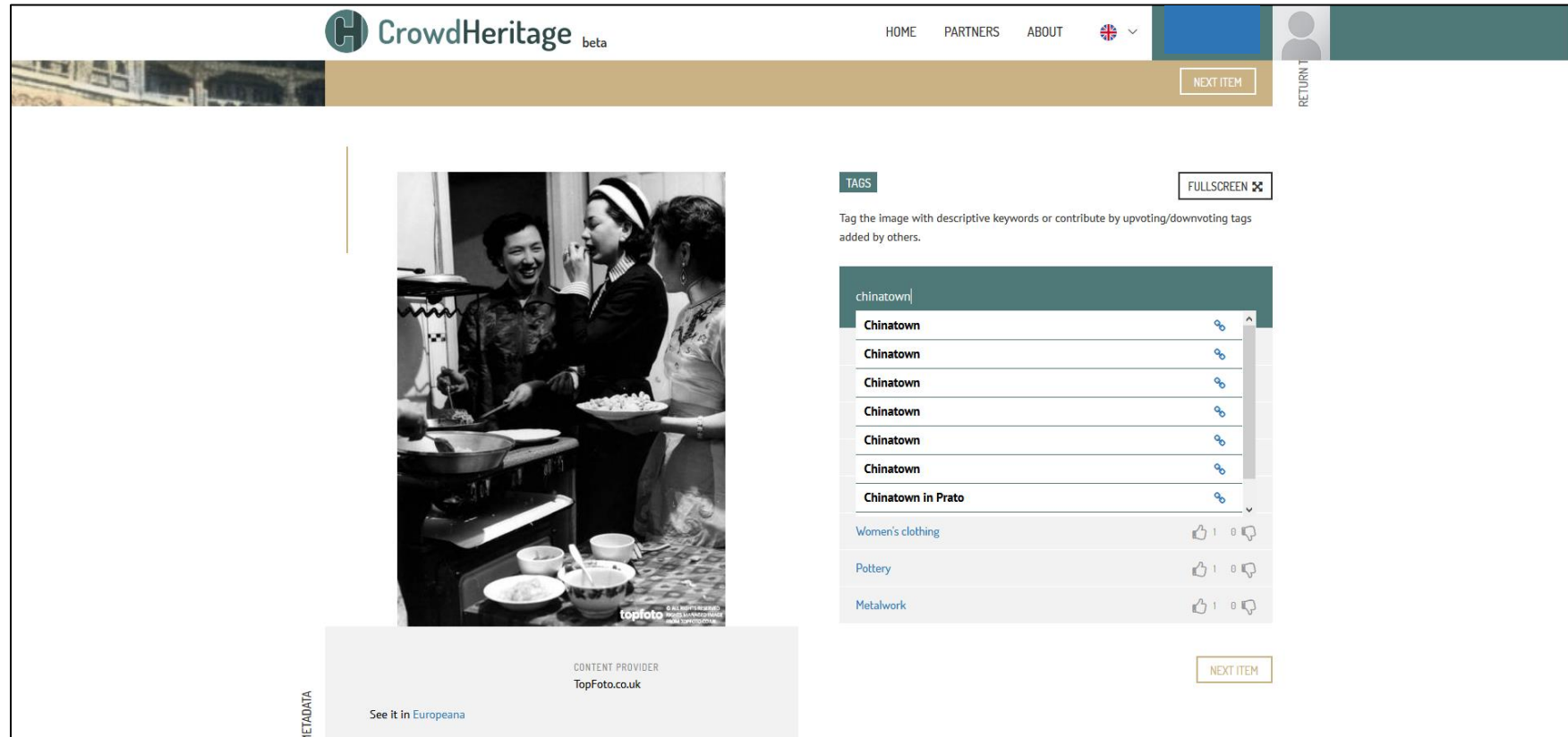
| Name | Results | On type of file and content |
|---------------------|---------|---|
| Newspapers | 187.076 | Good insight into public and political thought and affairs regarding China; includes Archology collection's entry on gardens |
| Natural History | 51.312 | 90% image, also texts and one sound file USA: primary literature on the topic of natural sciences Italy: images of plants in gardens |
| Art | 24.369 | mostly images 90%, mostly of porcelain and ceramic objects (also metal objects), less than 1/3 images of paintings, last few pages dedicated to modern Chinese political posters, includes also some material from "Archology" |
| Photography | 9.525 | includes also items from "Archology" and "Architecture" |
| Archaeology | 4.248 | except 1 video all images; mostly images of artefacts; 2nd place architectural designs and plans (Spain); 3rd herbariums, China room, gardens (images, Netherlands); 4th: mostly herbariums (UK, 58 items) |
| Music | 3.080 | mostly texts (>2000); Hungary: Open Society Archives at Central European University – Mostly Free Europe Radio Broadcasts on „Red China“ and „Communist China“, otherwise images of music instruments; France gave a lot of sound recordings from the field (anthropology) |
| Migration | 743 | mostly texts, also images; overlaps with Hungarian and Holland's Music collection ; UK: a lot of photo material of modern China towns, refugees from China; books written by Chinese migrants in EU |
| Fashion | 636 | mostly images |
| Manuscripts | 584 | 3/4 images, 1/4 text |
| Industrial Heritage | 381 | mostly images; overlapping with "Fashion" (fabric and accessories) |
| Sport | 183 | 95% of images, also 4 texts and 4 3D |
| Maps and Geography | 175 | mostly images, also texts |
| 1914-1918 | 53 | includes china/porcelain with EU origin |

| Short keyword lists | | Video: the PAGODE long keyword list with AAT in Wikidata entities | | |
|---|-------------|---|---|--|
| | A | M | O | |
| | Keyword ENG | AAT | WIKIDATA | |
| Historical Periods | 1 | | | |
| | 2 | Chinese Neolithic period | Chinese Neolithic periods | neolithic China (Q23646400) |
| Ceramics | 3 | Chinese Paleolithic period | Chinese Paleolithic periods | Paleolithic in China (Q47156595) |
| | 4 | Xia dynasty | Xia (ancient culture, style, pe | Xia dynasty (Q169705) |
| Photography | 5 | Shang dynasty | - | Shang dynasty (Q128938) |
| | 6 | Zhou dynasty | Zhou (culture) | Zhou dynasty (Q35216) |
| Textile & Furniture | 7 | Western Zhou | Western Zhou | Western Zhou (Q1069609) |
| Other (selected words from Motifs, Object Types, Techniques, Materials, Geographic References, People, Ideas, Knowledge and Practices, Books) | 8 | Eastern Zhou | Eastern Zhou | Eastern Zhou (Q2263327) |
| | 9 | Warring States period | - | Warring States period (Q185063) |
| | 10 | Spring and Autumn period | - | Spring and Autumn period (Q185047) |
| | 11 | Qin dynasty | - | Qin dynasty (Q7183) |
| | 12 | Han dynasty | - | Han dynasty (Q7209) |
| | 13 | Western Han dynasty | Western Han | Western Han Dynasty (Q1072949) |
| | 14 | Eastern Han dynasty | Eastern Han | Eastern Han Dynasty (Q1147037) |
| Crowd-sourcing | 15 | Wang Mang interregnum period | - | Wang Mang period (Q97614066) |
| | 16 | Three Kingdoms period | Three Kingdoms (Chinese sty | Three Kingdoms (Q185043) |
| | 17 | Shu Kingdom | - | Shu Han (Q320925) |
| | 18 | Wu Kingdom | - | Eastern Wu (Q274488) |
| | 19 | Wei Kingdom | - | Cao Wei (Q320930) |

Crowdsourcing



PAGODE – Europeana China is co-financed by the Connecting Europe Facility Programme, GA n. INEA/CEF/ICT/A2019/1931839



The screenshot shows the CrowdHeritage beta interface. At the top, there is a navigation bar with 'HOME', 'PARTNERS', and 'ABOUT' links, along with a language selector (UK flag) and a user profile icon. The main content area features a large historical photograph of three women in a kitchen. To the right of the image is a 'TAGS' section with a 'FULLSCREEN' button. Below this, a text prompt asks users to tag the image with descriptive keywords or contribute by upvoting/downvoting tags. A search bar contains the text 'chinatown', and a dropdown menu shows several 'Chinatown' suggestions and 'Chinatown in Prato'. Below the suggestions are three tags: 'Women's clothing', 'Pottery', and 'Metalwork', each with a thumbs-up icon, a '1' vote, and a thumbs-down icon. At the bottom of the image area, it says 'CONTENT PROVIDER TopFoto.co.uk' and 'See it in Europeana'. A 'NEXT ITEM' button is visible in the top right and bottom right corners of the interface.

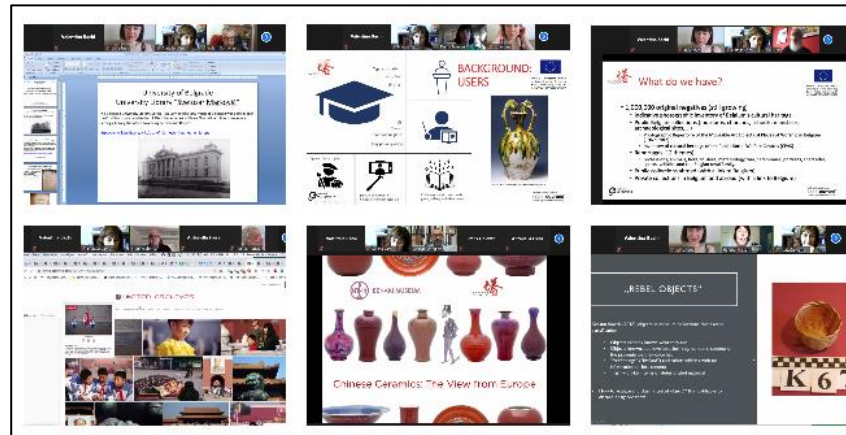
Source: CrowdHeritage.org

PAGODE Semantic Workshop

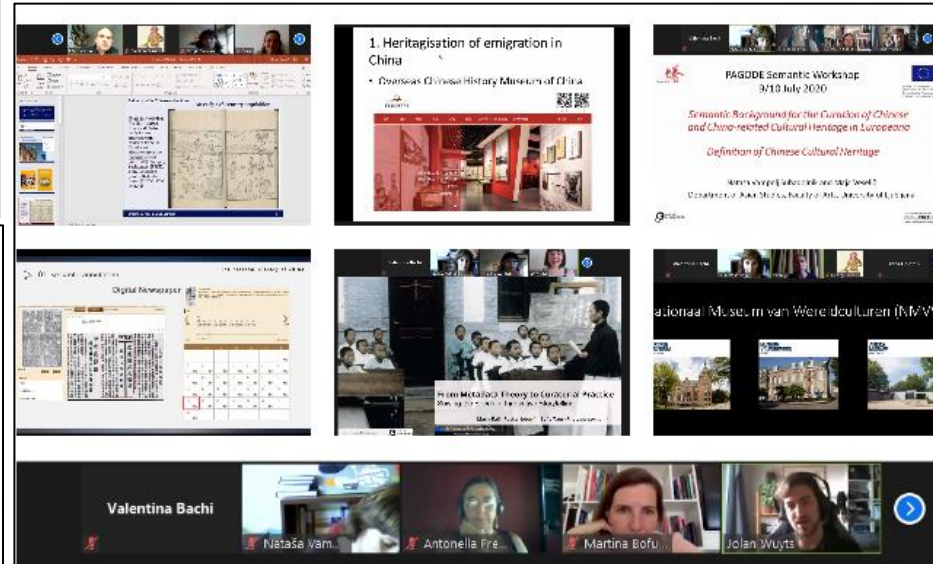
9-10 July 2020



PAGODE – Europeana China is co-financed by the Connecting Europe Facility Programme, GA n. INEA/CEF/ICT/A2019/1931839



Source: CrowdHeritage.org



Controlled Vocabulary – Statistics

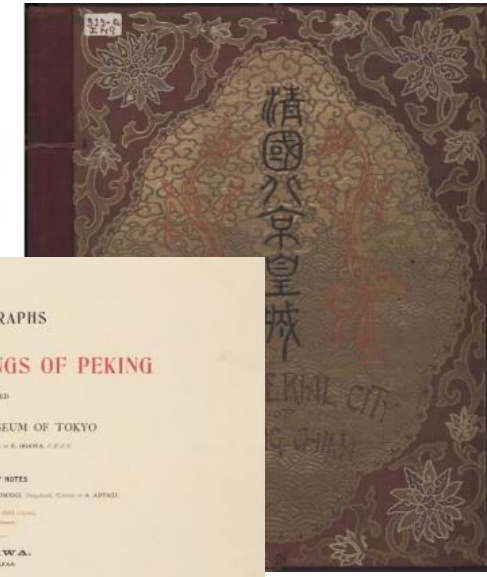


PAGODE – Europeana China is co-financed by the Connecting Europe Facility Programme, GA n. INEA/CEF/ICT/A2019/1931839

| Keyword Lists | Keywords (KW) | KW present in AAT | KW present in Wikidata | Newly created entries in WD |
|---------------------------------------|--|-------------------|------------------------|-----------------------------|
| Long list: enrichment | 685 | 235 | 564 | 121 |
| Short list: crowd-sourcing annotation | 245 | 141 | 216 | 29 |
| Short lists: mapping & annotation | Historical Periods, Ceramics, Textile & Furniture, Photography, selected keywords related to Motifs, Object Types, Techniques, Materials, Geographic References, People, Ideas, Knowledge and Practices, Books | | | |

- An article focusing on heritage or visual narratology
- Two articles on conceptualizations of CCH and the exchanges between China and Europe (*Asian Studies*, June 2021)
- A general-interest booklet on the issues related to the semantic framework, content selection, metadata processing as well as editorial storytelling within the PAGODE project
- Ingestion of 896 objects from the Slovene Ethnographic Museum to Europeana

Album of Forbidden city



Numismatics and pith-painting



Fotografija »Sanitetni oddelek avstro-ogrškega pomorske...«

- Skuškovna zbirka (SEM)
- Slovenski etnografski muzej



Fotografija »Avstro-ogrski pomorski odred na strelišču«...

- Skuškovna zbirka (SEM)
- Slovenski etnografski muzej



Fotografija »Stavba glavnega urada ameriške legacije«...

- Skuškovna zbirka (SEM)
- Slovenski etnografski muzej



Fotografija »Ministrska palača ameriške legacije«

- Skuškovna zbirka (SEM)
- Slovenski etnografski muzej



Fotografija »Belgijska legacija in cerkev sv. Mihaela«...

- Skuškovna zbirka (SEM)
- Slovenski etnografski muzej



Fotografija »Vzhodna cerkev v Pekingu«

- Skuškovna zbirka (SEM)
- Slovenski etnografski muzej

Album of photographs from Beijing



Contact Info



PAGODE – Europeana China is co-financed by the Connecting Europe Facility Programme, GA n. INEA/CEF/ICT/A2019/1931839

Nataša Vampelj Suhadolnik: Natasa.VampeljSuhadolnik@ff.uni-lj.si

Maja Veselič: Maja.Veselic@ff.uni-lj.si

Dunja Zorman: Dunja.Zorman@ff.uni-lj.si

Department of Asian Studies, Faculty of Arts, University of Ljubljana

<http://as.ff.uni-lj.si/english/english>

www.ff.uni-lj.si