

PAGODE GA

26/01/2021

T2.1&2.2 Content selection
- Annotation Pilot

Sofie Taes - Photoconsortium



Content selection & curation



- Scope of the activity > core of the project

Activity 2: Content's digitisation, annotation and ingestion to Europeana

The activity aims at aggregating 10,000 new Chinese Cultural Heritage objects in Europeana and to increase the discoverability of Chinese related objects in Europeana, both those already existing and the new ones aggregated during the Action. Moreover, the activity will develop a validated workflow, producing best practice, guidelines and procedures to support content providers and any Europeana accredited aggregator in the process of enriching China-related CH objects with appropriate and user-friendly annotation. The workflow will be developed in the course of the Action, following the discussions and experience of the Action's content providers, who will agree eventually on the best procedures and annotation practices, to be then disseminated to the whole community of Europeana content providers and aggregators. It should be noted that Photoconsortium, as accredited aggregator of Europeana, will coordinate the partners during the selection of content, the preparation of the datasets and the technical procedure for ingestion.

Content selection & curation



PAGODE – Europeana China is co-financed by the Connecting Europe Facility Programme, GA n. INEA/CEF/ICT/A2019/1931839

- PAGODE: a content-oriented project
 - Good content towards higher user engagement
 - So what is good content?
 - Data & metadata
 - Quantity & quality
 - Expansion & improvement
 - ‘Raw’ & ‘processed’



10,000+

newly digitized items

20,000+

enriched records

2,000+

annotations

Our commitment

- New collections
- Enrich existing records
- Content for events, promotion, outreach
- Content for editorials
- Content for exhibition
-

WORK DONE SO FAR



The search for the 10.000



PAGODE – Europeana China is co-financed by the Connecting Europe Facility Programme, GA n. INEA/CEF/ICT/A2019/1931839

- **Methodology**

- Dedicated meetings with (cross-activity) subgroup
- Multilateral dialogues with partners and Europeana
- Content mapping on the basis of partner input (metadata extraction)
- Back and forth with editorial activities
- Semantic framework as a touchstone

The search for the 10.000



PAGODE – Europeana China is co-financed by the Connecting Europe Facility Programme, GA n. INEA/CEF/ICT/A2019/1931839

- **Beyond the consortium: associate partners**

- Negotiations about interests and opportunities on both sides
- Looking for synergies and complementarity
- Optimizing visibility through editorials
- Current status:
 - KIK-IRPA: 3102
 - United Archives: 3739
 - Finnish Heritage Agency: 1000
 - Leiden University: 250
 - Slovene Ethnographic Museum: 896
 - Benaki Museum: 200
 - Museum Wereldculturen (quantity tbc)
 - KADOC KU Leuven (quantity tbc)
 - and we're continuing to **explore...**



TARGET **IN SIGHT!**

Presenting the 10.000

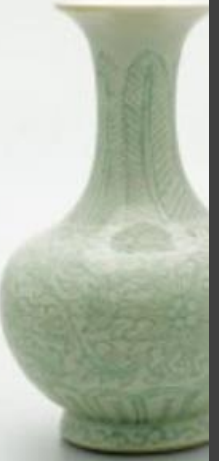
PAGODE – Europeana China is co-financed by the Connecting Europe Facility Programme, GA n. INEA/CEF/ICT/A2019/1931839

- collections of contemporary and historical photography
- documentary, press and artistic pictures
- artefacts in a wide range of materials (jade, wood, porcelain, stone, textile, metal...) from different contexts (daily life, religious practice, cultural or traditional context), times and areas
- books, maps, manuscripts
- watercolors, drawings, etchings
- artistic sculptures
- letters and ego-documents

- Finnish Missionary Archives
- Forbidden City album
- Photographs of Beijing: 449 photos
- Coins (a.o. from the Skušek collection)
- ca. 20-30 paintings from SEM
- Collection Dionysius Piatus Wantz 1920-1930
- Sino-Manchu books and scrolls

清國公使皇城





BEYOND THE 10.000: records for enrichment




Automated enrichment: 20.000



PAGODE – Europeana China is co-financed by the Connecting Europe Facility Programme, GA n. INEA/CEF/ICT/A2019/1931839

- Mapping of existing Europeana collections
- Focus on project partners and PHOTOCONSORTIUM members
- Focus on outstanding, 'open' collections

 PAGODE: the 20.000 ☆ ↗ ☁

File Edit View Insert Format Data Tools Add-ons Help Last edit was made 12 days ago by anyo...

	A	B	C	D	E	F	G	H	I
1	PAGODE								
2	The 20.000 Keyword: China No copyright limitations taken into account								
3	<div style="background-color: red; color: white; padding: 2px;"> 20.000 Keyword: China No copyright limitations taken into account </div>								
4	Europeana Fashion	https://www.europeana.eu/en/search?page=1&qf=PROVIDER%3A%22Europeana%20Fashion%22&query=China&view=grid	1066						
5	English metadata, excluding partners and Wellcome/Rijksmuseum	https://www.europeana.eu/en/search?page=1&qf=LANGUAGE%3A%22en%22&qf=PROVIDER%3A%22Europeana%20Sounds%22&qf=PROVIDER%3A%22OAPEN%20Foundation%22&qf=PROVIDER%3A%22Judaica%20Europeana%20Jewish%20Heritage%20Network%22&qf=PROVIDER%3A%22CARARE%22&qf=PROVIDER%3A%22National%20Library%20of%20Scotland%22&qf=PROVIDER%3A%22EFG%20-%20The%20European%20Film%20Gateway%22&qf=PROVIDER%3A%22The%20European%20Library%22&qf=PROVIDER%3A%22CultureGrid%22&qf=PROVIDER%3A%22Museum%22&qf=PROVIDER%3A%22The%20Great%20War%20Archives%20University%20of%20Oxford%22&qf=PROVIDER%3A%22MZE%22&qf=PROVIDER%3A%22EuropeanaTravel%22&qf=PROVIDER%3A%22Athena%22&qf=PROVIDER%3A%22LoCloud%22&qf=PROVIDER%3A%22Partage%20Plus%22&qf=PROVIDER%3A%22EUScreen%22&qf=PROVIDER%3A%22AthenaPlus%22&qf=PROVIDER%3A%22Europeana%20Food%20and%20Drink%22&qf=PROVIDER%3A%22IALH%22&query=China&view=grid	3941	English metadata for optimization of enrichment activities	6.100	-4 records			
6	Rijksmuseum, Wellcome Collection	https://www.europeana.eu/en/search?page=1&qf=PROVIDER%3A%22Rijksmuseum%22&qf=PROVIDER%3A%22Wellcome%20Collection%22&query=China&view=grid	7730	Outstanding collections	7730	-8 records			
7	Deutsche Digitale Bibliothek	https://www.europeana.eu/en/search?page=1&qf=PROVIDER%3A%22Deutsche%20Digitale%20Bibliothek%22&query=China&view=grid	3261	Outstanding collection	3311				
8	Östasiatiska museet - Collection Photography	https://www.europeana.eu/en/search?page=11&qf=PROVIDER%3A%22Swedish%20Open%20Cultural%20Heritage%20%7C%20K-sams%3C%3B%6%22&qf=DATA_PROVIDER%3A%22C3%96stasiatiska%20museet%22&qf=collection%3Aphotography&query=China&view=grid	5022	Outstanding collection	7907				
9	<div style="background-color: red; color: white; padding: 2px;"> 20.000 Keyword: China No copyright limitations taken into account </div>								
10									
11									
--									

Manual enrichment: 2.000



PAGODE – Europeana China is co-financed by the Connecting Europe Facility Programme, GA n. INEA/CEF/ICT/A2019/1931839

- Two annotation campaigns
 - Two themes
 - Two types of material (photography – artefacts)
 - Two types of content (new – existing)
- Campaign 1: bonus
 - Double deployment
 - Student project KU Leuven



Crowdsourcing:
platform, specs,
results & next
steps > **Spyros**

