



PAGODE – Europeana China is co-financed by the Connecting Europe Facility Programme, GA n. INEA/CEF/ICT/A2019/1931839

Older metadata of Chinese Cultural Heritage, and what to do to make it better?

Pagode Semantic Workshop (Ljubljana, 9-10/07/2020)

Erik Buelinckx

Royal Institute for Cultural Heritage (KIK-IRPA)





and China-related



PAGODE – Europeana China is co-financed by the Connecting Europe Facility Programme, GA n. INEA/CEF/ICT/A2019/1931839

Older metadata of Chinese Cultural Heritage, and what to do to make it better?

Pagode Semantic Workshop (Ljubljana, 9-10/07/2020)

Erik Buelinckx

Royal Institute for Cultural Heritage (KIK-IRPA)





- Who are we?
- What do we have?
- China-related cultural heritage data/metadata at KIK-IRPA
 - Past
 - Present
- *[Digitising photographic prints vs negatives]*
 - Future

Who are we?



PAGODE – Europeana China is co-financed by the Connecting Europe Facility Programme, GA n. INEA/CEF/ICT/A2019/1931839



- Established in 1948, the Royal Institute for Cultural Heritage (KIK-IRPA) is one of ten scientific institutions falling within the competence of the Federal Ministry of Scientific Policy of Belgium. KIK-IRPA, based in Brussels (Belgium), is committed to the (photographic) inventory, the scientific study, the conservation and the promotion of the country's artistic and cultural property.
- <http://www.kikirpa.be> ~ <http://balat.kikirpa.be>

What do we have?



- 1,000,000 original negatives (still growing)
 - Indicative photographic inventory of Belgium's cultural heritage
 - Public Belgian collections (museums, churches, schools, ministries, archaeological sites, ...)
 - Photographic Repertoire of the Moveable Art Objects of Places of Worship in Belgium (1967-1982)
 - Inventory of cultural heritage of the Public Social Welfare Centres (CPAS)
 - Reportages (12 themes)
 - professions, animals, flora, folklore, meteorology, war, ceremonies, portraits, spectacles, sports, vehicles and the Belgian royal family.
 - Public collections abroad (with a link to Belgium)
 - Private collections in Belgium and abroad (with a link to Belgium)

Index cards (past-present)



PAGODE – Europeana China is co-financed by the Connecting Europe Facility Programme, GA n. INEA/CEF/ICT/A2019/1931839



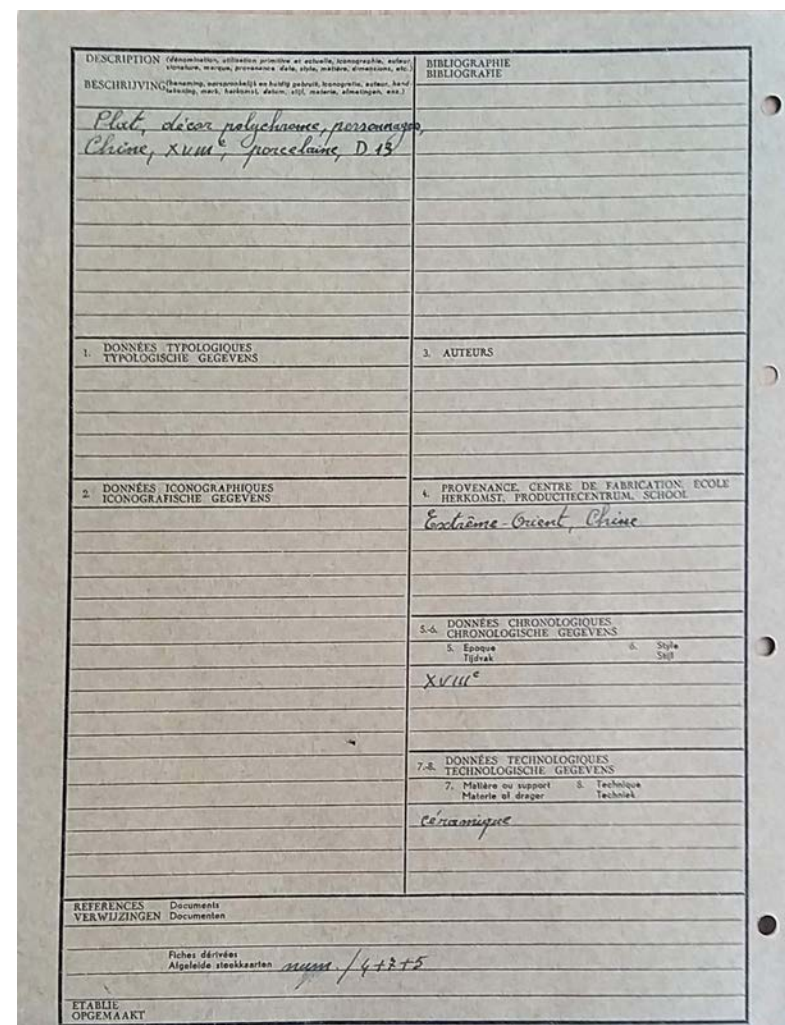
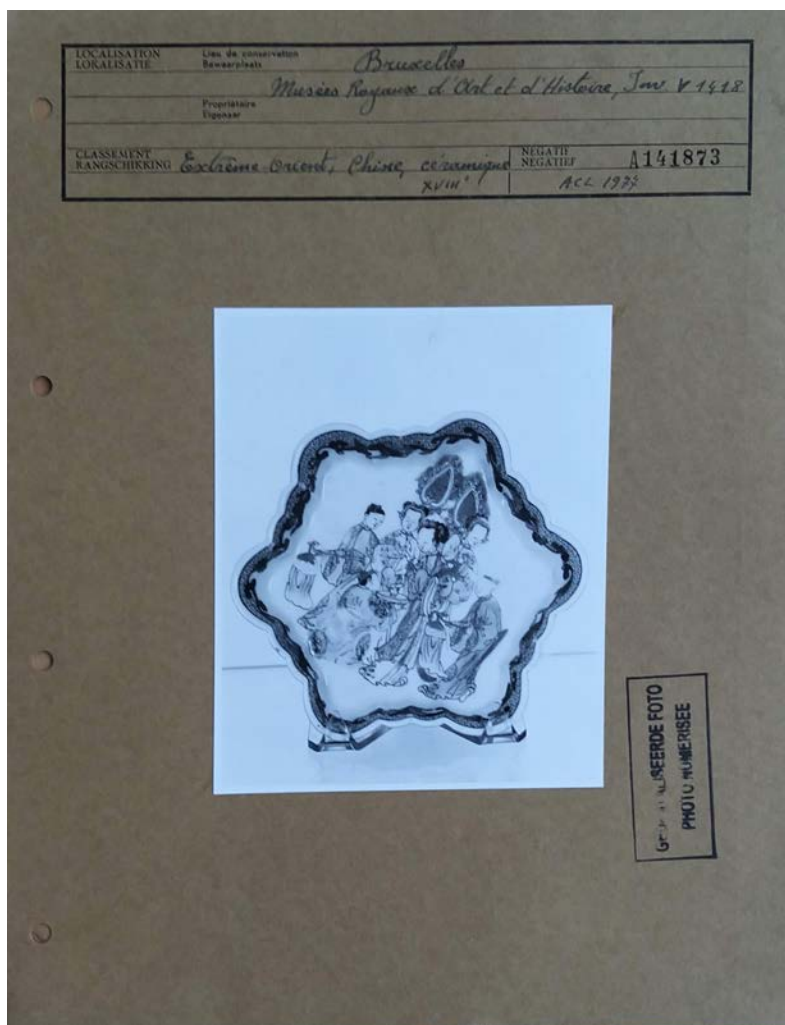
Index cards (past-present)



Old cartons (past-present)



PAGODE – Europeana China is co-financed by the Connecting Europe Facility Programme, GA n. INEA/CEF/ICT/A2019/1931839



Old cartons (past-present)



PAGODE – Europeana China is co-financed by the Connecting Europe Facility Programme, GA n. INEA/CEF/ICT/A2019/1931839

LOCALISATION LOKALISATIE	Lieu de conservation Bewaarplaats	Bruxelles	
		Musées Royaux d'Art et d'Histoire, Inv. V 1418	
	Propriétaire Eigenaar		
CLASSEMENT RANGSCHIKKING	Extremes Orient, Chine, céramique XVIII ^e	NEGATIF NEGATIEF	A141873
		ACL 1977	

Extremes Orient, Chine

DESCRIPTION (dénomination, utilisation primitive et actuelle, iconographie, auteur, signature, marque, provenance date, style, matière, dimensions, etc.)	BIBLIOGRAPHIE BIBLIOGRAFIE
BESCHRIJVING (benaming, oorspronkelijk en huidige gebruik, iconografie, auteur, handtekening, merk, herkomst, datum, stijl, materie, afmetingen, enz.)	
Plat, décor polychrome, personnages,	
Chine, XVIII ^e , porcelaine, D. 13	

Old cartons



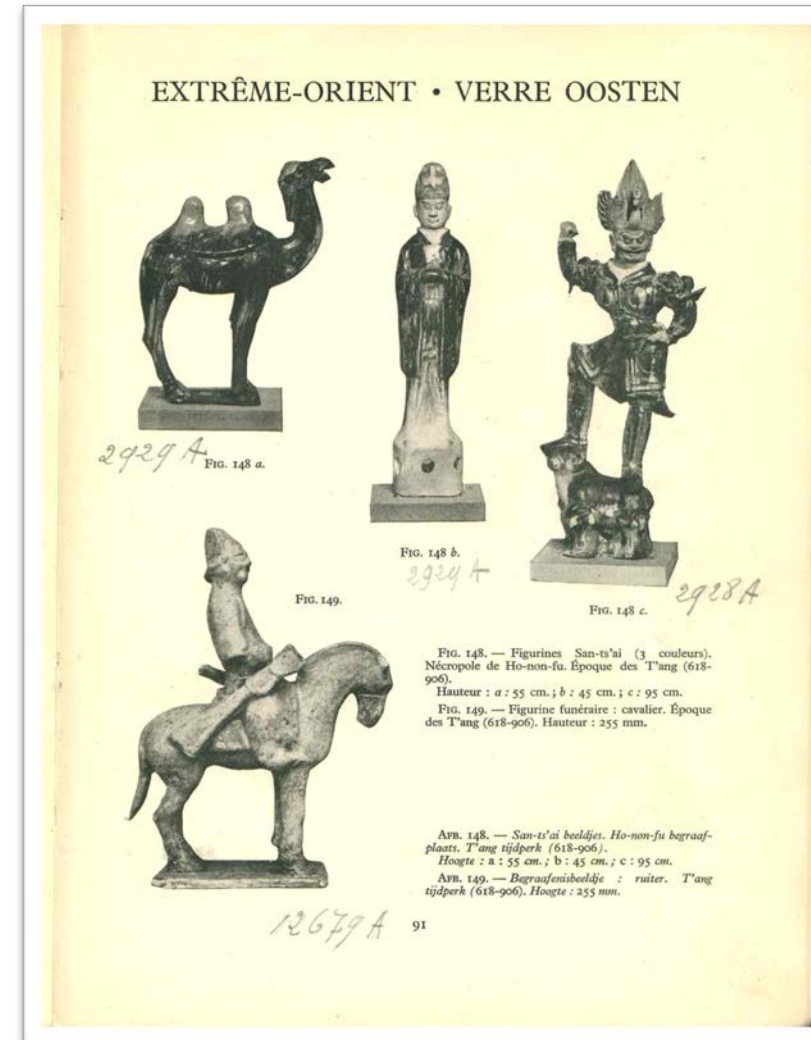
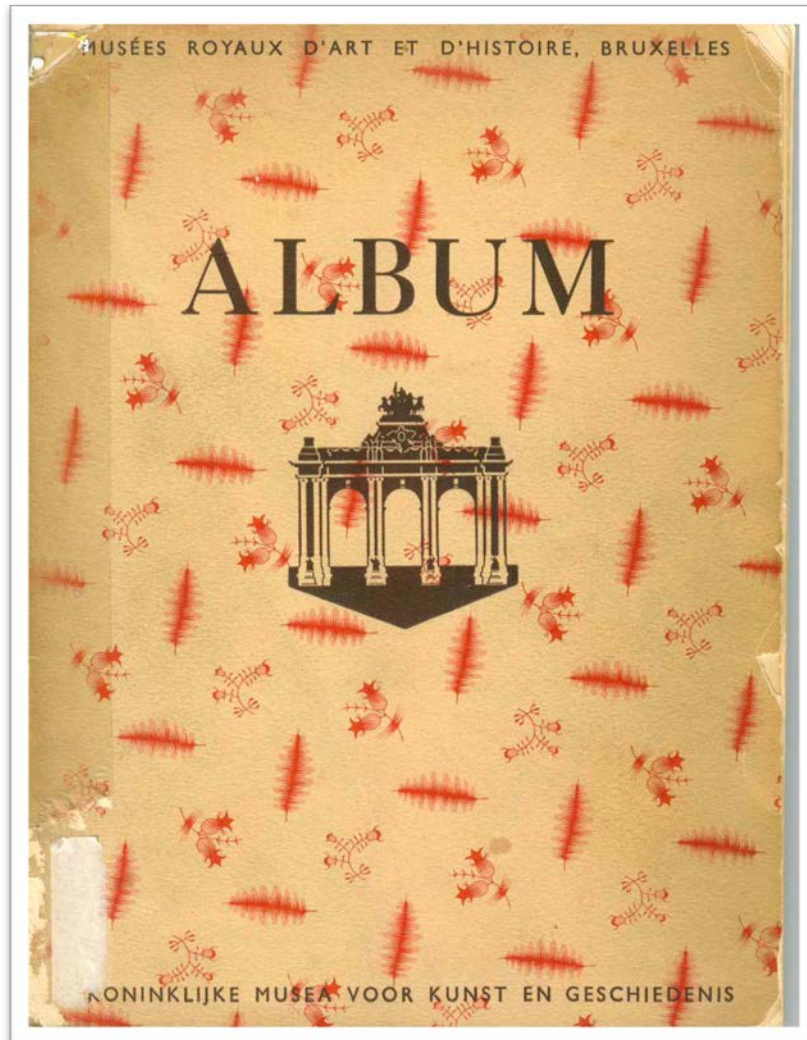
PAGODE – Europeana China is co-financed by the Connecting Europe Facility Programme, GA n. INEA/CEF/ICT/A2019/1931839

LOCALISATION LOKALISATIE	Lieu de conserva Bewaarplaats
	Propriétaire Eigenaar
CLASSEMENT RANGSCHIKKING	<i>Extrême-Orient</i>

4. PROVENANCE, CENTRE DE FABRICATION, ECOLE HERKOMST, PRODUCTIECENTRUM, SCHOOL	
<i>Extrême-Orient, Chine</i>	
5-6. DONNÉES CHRONOLOGIQUES CHRONOLOGISCHE GEGEVENS	
5. Epoque Tijdvak	6. Style Stijl
<i>XVIII^e</i>	
7-8. DONNÉES TECHNOLOGIQUES TECHNOLOGISCHE GEGEVENS	
7. Matière ou support Materie of drager	8. Technique Techniek
<i>Céramique</i>	
<i>Chine, XVIII^e, porcelaine, 12.12</i>	

DESCRIPTION (dénomina- tion, m)
BESCHRIJVING (benaming, tekening, m)
<i>Plat, déco</i>
<i>Chine, XVIII^e, porcelaine, 12.12</i>

Describing aids/sources (past)



Musées royaux d'art et d'histoire, Bruxelles, *Album*, 1936

Describing aids/sources (past)

PAGODE – Europeana China is co-financed by the Connecting Europe Facility Programme, GA n. INEA/CEF/ICT/A2019/1931839

66. Chameau de bât

Terre cuite. Chine. Epoque des T'ang, 618-906. H. 52,5 cm. (Inv. ExO. 944).

Le chameau de haute taille, venu anciennement de Bactriane, qui par déserts et montagnes, suivait les longues pistes caravanières reliant la Chine aux grandes civilisations sédentaires d'Asie et d'Europe, apportant à Ch'ang-an, la capitale, les richesses de tout l'empire et des pays lointains, fut un des sujets de prédilection des modelleurs de figurines funéraires T'ang. Les images de chevaux de selle et de bât, mais aussi de chameaux de selle et de bât, accompagnaient dans leur sépulture les personnages importants.

La statuette fait partie d'un ensemble de plusieurs grandes figurines trouvées dans une tombe située à 8 km au nord de la ville de Ho-nan, en Chine centrale.

En terre cuite rosâtre, elle est ornée de glaçures plombifères colorées à l'aide d'oxydes métalliques jaunes, verts, bruns, gamme habituelle des émaux T'ang, à laquelle s'ajoute parfois le bleu. Modelé avec humour et un sens aigu de l'observation, l'animal, bien d'aplomb sur ses jambes musclées, tête relevée, yeux mi-clos, batère d'impatience à prendre le départ.

Des faces de démons ornent les deux gros sacs qui chargent le bât, images prophylactiques tournées vers le ciel, peut-être protégeront-elles sa longue course...

R. H.

66. Lastkameel

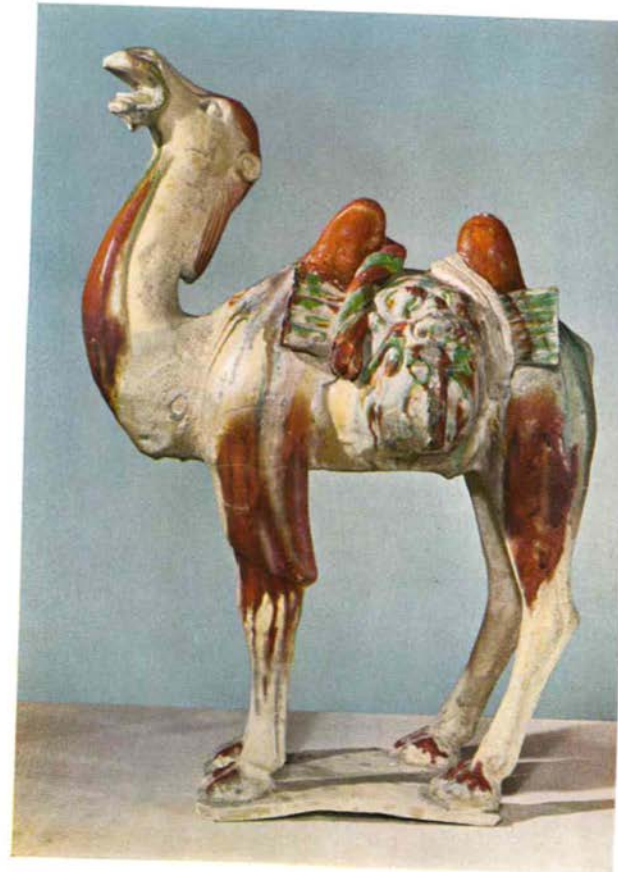
Terracotta. China. T'ang-tijdperk, 618-906. H. 52,5 cm. (Inv. ExO. 944).

De grote kameel, in vroeger tijden uit Baktriana gekomen, die doorheen woestijnen en berglanden de lange karavaantochten volgde, welke China met de grote sedentaire beschavingen van Azië en Europa in betrekking stelden, en te S'ang-an, de hoofdstad, de rijkdommen van gans het rijk en van verre landen aanbracht, was een van de geliefde onderwerpen voor de boetseerders van grafbeeldjes tijdens het Tang-tijdvak. Afbeeldingen van rij- en lastpaarden, maar ook van rij- en lastkamelen vergezelden belangrijke personen in hun grafsteden.

Dit beeldje maakt deel uit van een ensemble van verschillende figuurtjes van vrij grote afmetingen, weergevonden in een graf op ongeveer 8 km ten noorden van de stad Ho-nan in centraal China.

Het is vervaardigd uit rozige terracotta en versierd met loodhoudend glazuur, gekleurd door middel van gele, groene en bruine metaaloxiden, de gewone gamma van het Tang-émail, waaraan soms ook blauw wordt toegevoegd. Met humor en scherp observatievermogen gemodelleerd staat het dier, flink op zijn gespierde poten geplaat, met de kop omhoog en de ogen half toe, te schreeuwen van ongeduld om te vertrekken.

Twee duivelstronies versieren de twee dikke zakken die over het draagzadel hangen: misschien zijn het kwaadwerende hemelwaarts gewende beelden, die het dier tijdens zijn lange tocht moeten beschermen.





Presentation (present)



PAGODE – Europeana China is co-financed by the Connecting Europe Facility Programme, GA n. INEA/CEF/ICT/A2019/1931839



© KIK-IRPA, Brussels (Belgium), cliché A141873]

-  [Print preview image](#)
-  [Zoom](#)
-  [All photos for this object](#)

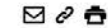
 [Download image](#)

Photographer: inconnu, IRPA
Type of object: négatif monochrome
Date: 1977 -

[< Back to results](#)

Personnages

Object number:	11056167
Type of object:	plat
Inventory number:	V.1418
Institution place:	Bruxelles[localité]
Institution:	Musées Royaux d'Art et d'Histoire
Creator:	inconnu (céramiste) 
Date:	1701 - 1800
Material:	porcelaine
Technique:	cuit[céramique] , polychromé
Place of production:	Chine
Dimensions:	<i>diamètre:</i> 13 cm
Description:	Plat hexagonal avec décor de personnages
Permalink:	http://balat.kikirpa.be/object/11056167



Iconography

People **Subject**

- Person:* [Chinois](#)
- Person:* [noble](#)
- Person:* [serviteur](#)

Present-future: linked vocabularies



PAGODE – Europeana China is co-financed by the Connecting Europe Facility Programme, GA n. INEA/CEF/ICT/A2019/1931839

Thesaurusterm	Beheergegevens	Fototheekgegevens
Term		
Term	porselein	
Soort term	materiaal	
	onderwerp	
Term code	nl	
Status	descriptor	
Relaties		
Use		
Used for		
Broader Term	aardewerk	
Narrower Term	vuurvastporselein zachte porselein kantporselein	
Related Term	Chine de commande[n] imari[n]	
Equivalent Term	porcelaine	
Bron en definitie		
Bron	AAT	Nummer 300010662
Scope Note	<p>Verwijst naar een soort hardgebakken, doorschijnende keramiek van vuurbestendige witte klei, of 'kaolien', en een veldspathoudende steen die tijdens het bakken reageert. De klei zorgt ervoor dat het voorwerp de vorm behoudt, terwijl de steen wordt omgezet in natuurlijk glas. AAT-NL</p> <p>Fijn, wit, halfdoorschijnend aardewerk met ongekleurd, sterk glimmend glazuur, gebakken van een bijzondere soort van klei met zekere bijmengsels. Bron: Van Dale, I, 1</p>	

Present-future: linked vocabularies



PAGODE – Europeana China is co-financed by the Connecting Europe Facility Programme, GA n. INEA/CEF/ICT/A2019/1931839

Up to lido:materialsTech

lido:termMaterialsTech

Material

lido:conceptID

AND { source is equal to AAT
term.number does not start with 9

http://vocab.getty.edu/aat/

term.number

lido:term

term

Present-future: linked vocabularies



PAGODE – Europeana China is co-financed by the Connecting Europe Facility Programme, Grant n. INEA/CEF/ICT/A2019/1931839

```

<lido:termMaterialsTech lido:type="material">
  <lido:conceptID lido:type="URI">http://vocab.getty.edu/aat/30001
  <lido:term lido:addedSearchTerm="no">porcelaine</lido:term>
</lido:termMaterialsTech>
lido:materialsTech>
  
```

XML is valid based on EDM

```


1 <?xml version="1.0" encoding="UTF-8" standalone="yes"?>
2 <rdf:RDF xmlns:ore="http://www.openarchives.org/ore/terms/"
3   xmlns:owl="http://www.w3.org/2002/07/owl#"
4   xmlns:rdaGr2="http://rdvocab.info/ElementsGr2/"
5   xmlns:rdf="http://www.w3.org/1999/02/22-rdf-syntax#
6   xmlns:rdfs="http://www.w3.org/2000/01/rdf-schema#
7   xmlns:crm="http://www.cidoc-crm.org/rdfs/cidoc_crm
8   xmlns:skos="http://www.w3.org/2004/02/skos/core#"
9   xmlns:dc="http://purl.org/dc/elements/1.1/"
10  xmlns:wgs84="http://www.w3.org/2003/01/geo/wgs84_
11  xmlns:dcterms="http://purl.org/dc/terms/"
12  xmlns:xalan="http://xml.apache.org/xalan"
13  xmlns:edm="http://www.europeana.eu/schemas/edm/"
14  xmlns:foaf="http://xmlns.com/foaf/0.1/"
15  <edm:ProvidedCHO rdf:about="http://mint-projects.image.r
16  <dc:creator xml:lang="fr">inconnu (céramiste)</dc:cre
17  <dc:creator xml:lang="fr">inconnu</dc:creator>
18  <dc:description xml:lang="fr">Inst./Coll.: Musées Roy
19  <dc:description xml:lang="fr">éventail </dc:descripti
20  <dc:description xml:lang="fr">Plat hexagonal avec déc
21  <dc:format xml:lang="fr">cuit[céramique]</dc:format>
22  <dc:format xml:lang="fr">polychromé</dc:format>
23  <dc:identifier>KIK-IRPA n° 11056167</dc:identifier>
24  <dc:identifier>Pa1_10458294</dc:identifier>
25  <dc:subject xml:lang="fr">éventail</dc:subject>
26  <dc:title xml:lang="fr">Personnages</dc:title>
27  <dc:type xml:lang="en">Photography</dc:type>
28  <dc:type xml:lang="fr">plat</dc:type>
29  <dc:type xml:lang="fr">Extrême-Orient - Chine - Céram
30  <dcterms:created>1701/1800</dcterms:created>
31  <dcterms:extent>diamètre: 13 cm</dcterms:extent>
32  <dcterms:medium rdf:resource="http://vocab.getty.edu,
33  <dcterms:medium xml:lang="fr">porcelaine</dcterms:med
34  <dcterms:spatial>Chine</dcterms:spatial>
35  <edm:type>IMAGE</edm:type>
36 </edm:ProvidedCHO>
37 <edm:WebResource rdf:about="http://balat.kikirpa.be/ima
38 <edm:WebResource rdf:about="http://balat.kikirpa.be/obj
39 <skos:Concept rdf:about="http://vocab.getty.edu/aat/3000
40 <ore:Aggregation rdf:about="http://mint-projects.image.r
41  <edm:aggregatedCHO rdf:resource="http://mint-project
42  <edm:dataProvider>Royal Institute for Cultural Herita
43  <edm:isShownAt rdf:resource="http://balat.kikirpa.be,
44  <edm:isShownBy rdf:resource="http://balat.kikirpa.be,
45  <edm:subject rdf:resource="http://balat.kikirpa.be/im
  
```


Present-future: linked vocabularies



PAGODE – Europeana China is co-financed by the Connecting Europe Facility Programme, Grant n. INEA/CEF/ICT/A2019/1931839

EDM
Europeana
Show all



CC BY SA Attribution-ShareAlike

View item at [Royal Institute for Cultural Heritage \(KIK-IRPA\) \(Brussels, Belgium\)](#)

[Cite on Wikipedia](#)

Translate details

Personnages

Description: Inst./Coll.: Musées Royaux d'Art et d'Histoire (Bruxelles) / Inv.: V.1418

Subject: éventail

Creator: inconnu (céramiste) inconnu

Place: Chine

Date: 1701/1800

Type: Photography plat Extrême-Orient - Chine - Céramique

Format: cuit[céramique] polychromé <http://vocab.getty.edu/aat/300010662> porcelaine diamètre: 13 cm

Identifier: KIK-IRPA n° 11056167 Pa1_10458294

isShownAt: <http://balat.kikirpa.be/object/11056167>

isShownBy: <http://balat.kikirpa.be/image/A141873>

EDM Object: <http://balat.kikirpa.be/image/A141873/small>

Data provider: Royal Institute for Cultural Heritage (KIK-IRPA) (Brussels, Belgium)

Provider: Photoconsortium

Search also for:

Title
[Personnages](#)

Who
[inconnu \(céramiste\)](#)
[inconnu](#)

What
[Photography](#)
[plat](#)
[Extrême-Orient - Chine - Céramique](#)
[éventail](#)
[cuit\[céramique\]](#)
[polychromé](#)

Provider
[Royal Institute for Cultural Heritage \(KIK-IRPA\) \(Brussels, Belgium\)](#)
[Photoconsortium](#)

Presentation (present)

PAGODE – Europeana China is co-financed by the Connecting Europe Facility Programme, GA n. INEA/CEF/ICT/A2019/1931839

[← Back to results](#)



© KIK-IRPA, Brussels (Belgium)

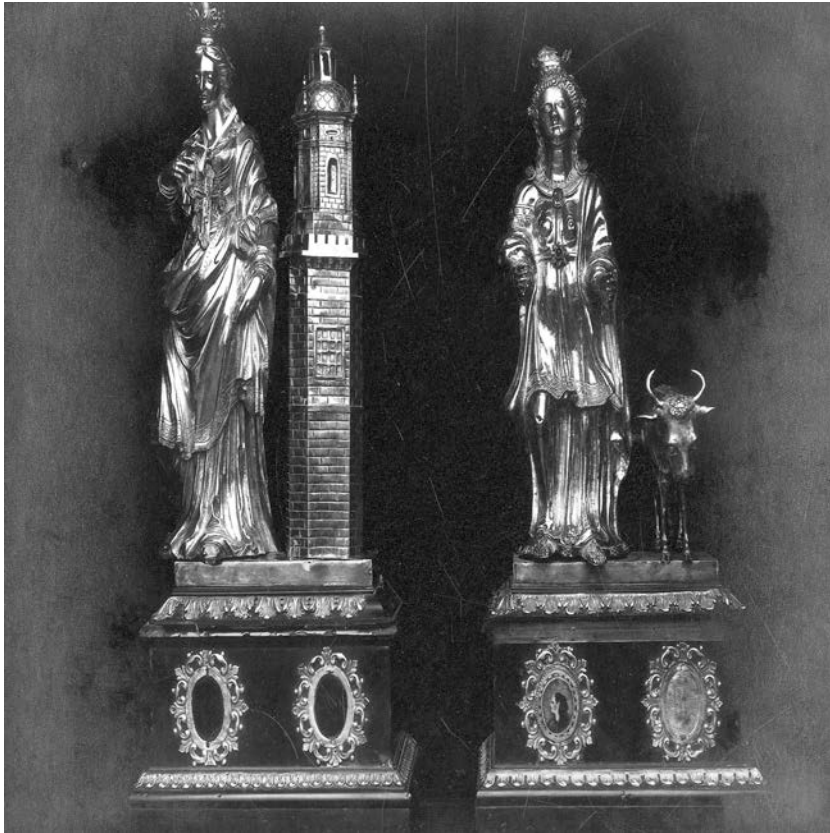
- [Print preview image](#)
- [Zoom](#)
- [All photos for this object](#)
- [Download image](#)

Photographer: inconnu, IRPA
Type of object: négatif monochrome
Date: 1977 -

Digitising photographic prints vs negatives



PAGODE – Europeana China is co-financed by the Connecting Europe Facility Programme, GA n. INEA/CEF/ICT/A2019/1931839



<http://balat.kikirpa.be/object/10068665>



negatives

PAGODE – Europeana China is co-financed by the Connecting Europe Facility Programme, GA n. INEA/CEF/ICT/A2019/1931839



5



<http://balat.kikirpa.be/object/112328>



Jin Chan / Chan Chu: this mythical creature is said to appear during the full moon, near houses or businesses that will soon receive good news (most of the time, the nature of this good news is understood to be wealth-related). [Wikipedia]

Thank you!



PAGODE – Europeana China is co-financed by the Connecting Europe Facility Programme, GA n. INEA/CEF/ICT/A2019/1931839

- Erik Buelinckx
- erik.Buelinckx@kikirpa.be
- Twitter: [@ErikBuelinckx](https://twitter.com/ErikBuelinckx)
- LinkedIn: [ErikBuelinckx](https://www.linkedin.com/in/ErikBuelinckx)
- Royal Institute for Cultural Heritage (KIK-IRPA)
-  <http://www.kikirpa.be>
-  <http://balat.kikirpa.be>

問號

(?)