

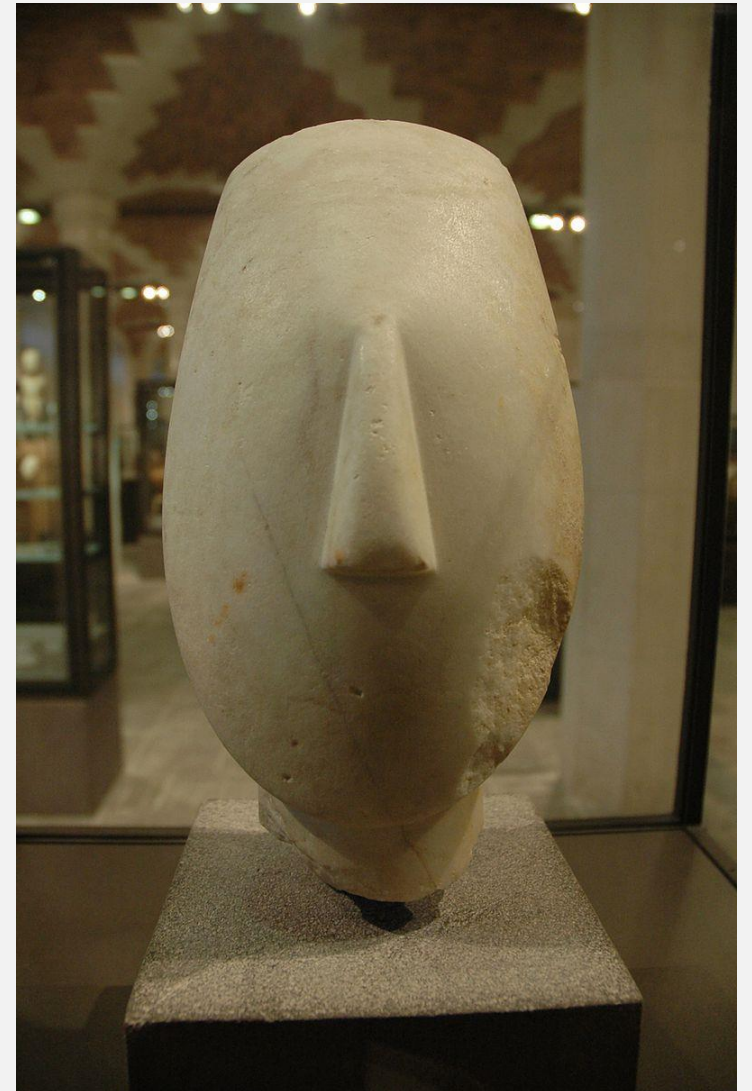
# SEMANTIC ASPECTS OF „REBEL OBJECTS“

**Helena Motoh**

Science and Research Centre Koper

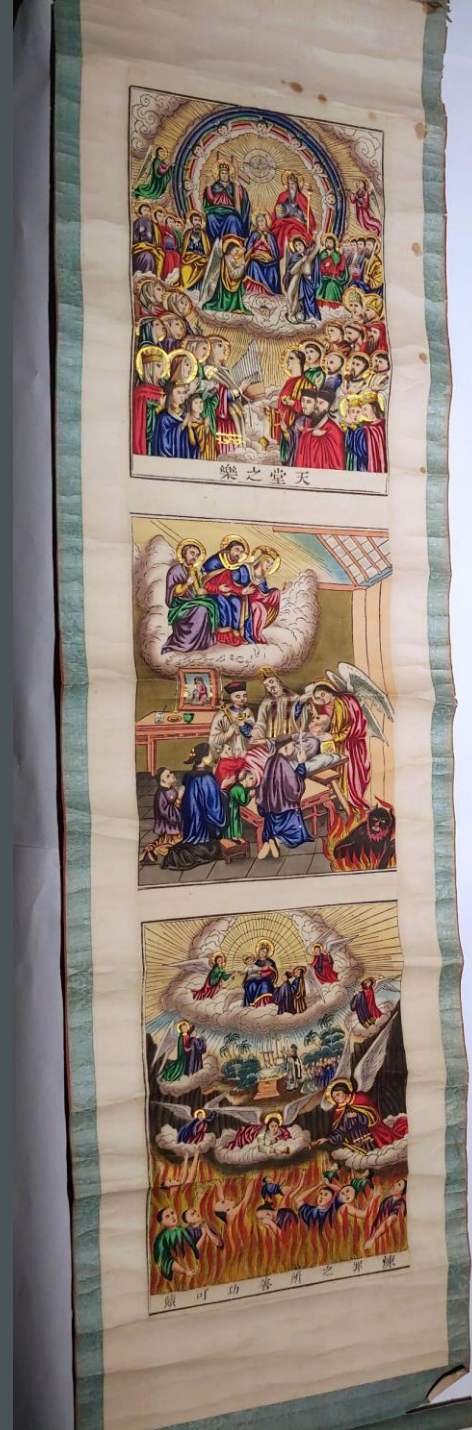
# „ORPHANED OBJECTS“

- looted and/or smuggled objects, where provenance is unclear, sometimes deliberately (cf. Gill and Chippindale, 1993; Leventhal and Daniels, 2013)
- first used in archeology for looted Cycladic figurines
- without clear provenance, (excavation) details, decontextualized
- treated as isolated (art) pieces in museum
  
- how to treat and classify an object without context?
- how much of the „object“ is defined by its context or the lack thereof?
- how can the lack of context be presented as context?



# CELJE MISSIONARY SCROLL

- Part of the „Asian Collection“, objects that were confiscated after WWII and ended up in Regional Museum Celje
- apart from its origin (Zikawei/Xujiahui workshops), the provenance is unknown



# „REBEL OBJECTS“

Kerstin Smeds (2018): objects in museum collections that escape classification

- Objects nobody knows what they are
  - Objects known, but have lost their reg. numbers, context or the provenience they once had
  - "freefindings" ("lösfynd") and other oddities with no information or lost context
  - Trash – broken items or deteriorated material
- 
- How to analyze and classify „rebel object“? It is justifiable to discard or ignore them?





# „TINY CUPS“

- Regional Museum Celje, collection of Alma Karlin (1889-1950), woman world traveller in the interwar period
- large number of tiny cups, pots, etc. in different materials



Alma Karlin (1889-1950)

# MINIATURE TOY KITCHEN

- girls' toy in early 20th century Japan
- matches Karlin's habit of collecting miniatures

