



PAGODE – Europeana China is co-financed by the Connecting Europe Facility Programme, GA n. INEA/CEF/ICT/A2019/1931839

Keywords for the Annotation and Enrichment of Metadata of Chinese and China-related Cultural Heritage in Europeana

PAGODE Semantic Workshop, 10 July 2020

Dunja Zorman, *Researcher*

Department of Asian Studies, Faculty of Arts,

University of Ljubljana

Table of Contents



PAGODE – Europeana China is co-financed by the Connecting Europe Facility Programme, GA n. INEA/CEF/ICT/A2019/1931839

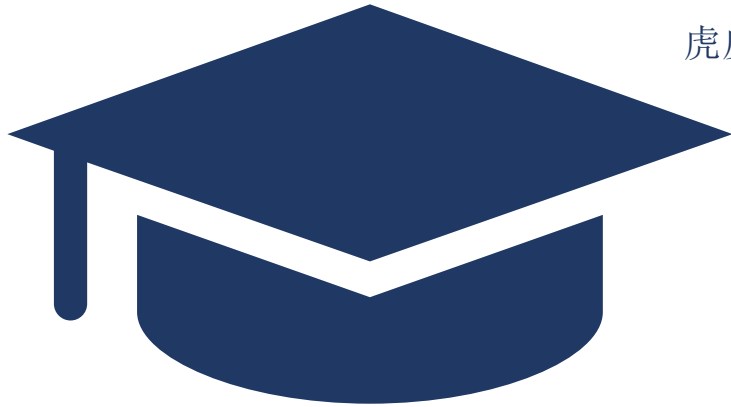
- BACKGROUND: USERS, SOURCES
- STRUCTURE: KEYWORDS
- KEYWORDS'S CATEGORIES: LOCATION, HISTORICAL PERIODS, PEOPLE - EXAMPLES
- MAIN TAKEAWAYS AND STARTING POINTS FOR DISCUSSION



Tiger skin pattern

Hu pi ban

虎皮斑



三彩

Sancai

Three colour glaze

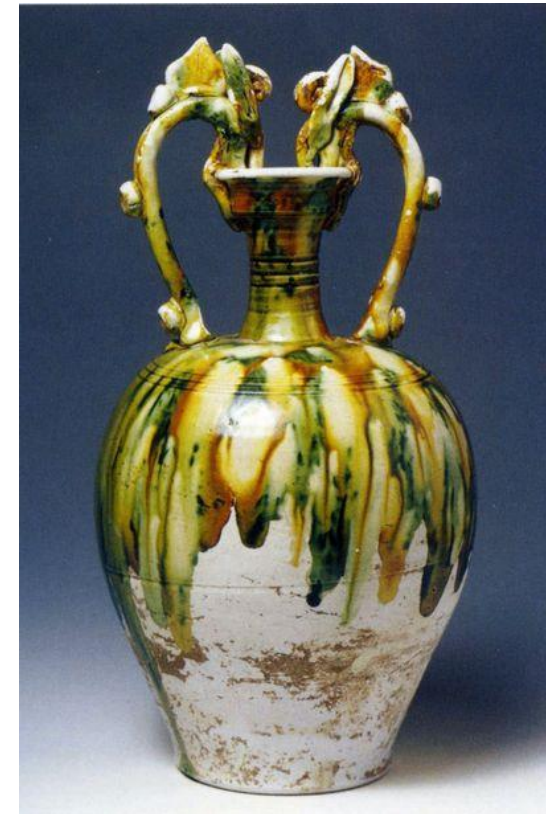
Tang period glazing



BACKGROUND: USERS



PAGODE – Europeana China is co-financed by the Connecting Europe Facility Programme, GA n. INEA/CEF/ICT/A2019/1931839



Source: Europeana.eu/ Fondazione Torino Musei (MAO)

Egg and Spinach glaze



(special collections of)
Chinese ceramics/ porcelain



Chinese porcelain bowls with
green, yellow, and white colour



Art & Architecture Thesaurus®

Professional literature: Furniture, Ceramics, Iconography



Material that we had in our disposal (currently in Europeana, KIK-IRPA, United Archives, Library of Leiden University, etc.) + Rationale for definition of CCH in Europeana



BACKGROUND: SOURCES



PAGODE – Europeana China is co-financed by the Connecting Europe Facility Programme, GA n. INEA/CEF/ICT/A2019/1931839

中國圖像志索引典
Chinese Iconography Thesaurus

 PHOTOCONSORTIUM

Photography Thesaurus – courtesy of PAGODE Partners Photoconsortium

Official Media Partner
DIGITAL CULTURE
www.digitalmeetsculture.net

STRUCTURE: KEYWORDS (KW)



PAGODE – Europeana China is co-financed by the Connecting Europe Facility Programme, GA n. INEA/CEF/ICT/A2019/1931839

No.	Category	No. of KW	Themes
1.	Geographic References	263	Provinces and capitals, Historical capitals, UNESCO sites and biospheres, Archaeological sites, Rivers, Mountains, Places of production (ceramics and furniture), Special terms from history, Migration
2.	Historical Periods	169	Historic periods, Historic events, Modern historic events, Neolithic cultures in China, Palaeolithic cultures in China
3.	People	392	Emperors, Seal artists, Historians, Classical prose writers, Classical poets, Classical Playwrights, Painters, Artists, Calligraphers, Scholar-officials, Eunuchs, Collectors, Sinologists, Jesuits –missions, C-pop artist, Martial arts icons, Other
4.	Ideas, Knowledge and Practices	679	Art, Architecture, Film & Animation, Gardens, Festivals, Medicine, Music, Cuisine, Movies, Oral tradition, Martial arts, Shadow puppetry, Tea culture, Silk Road, Religion, Trade, Numismatics, Crafts and Industries, Inventions and discoveries, Myths and Legends, State and Government Affairs, Entertainment and Games, Travel, Imperial Examination, Chinoiserie, Furniture, Migration

STRUCTURE: KEYWORDS (KW)



PAGODE – Europeana China is co-financed by the Connecting Europe Facility Programme, GA n. INEA/CEF/ICT/A2019/1931839

No.	Category	No. of KW	Subcategories
5.	Ceramics	196	Chinese ceramics and pottery related vocabulary
6.	Photography	73	Typical motifs and technical terms
7.	Books	209	Collections of University of Leiden, Classical texts, Classical dictionaries, Classical literature, Encyclopaedia, Classical poetry, Classical historiography, Chinese literature, Classical novels, Literary characters, Classical plays, Modern literature, Contemporary novels, Contemporary literature, Wuxia fiction
8.	Textile	68	Textile related vocabulary
9.	Motifs	533	Different motifs, symbols, visual imagery, etc.
10.	Object Types	394	In GLAMs, with special emphasis on the objects, techniques, and materials particular to China
11.	Techniques	114	
12.	Materials	144	

UNESCO site in China

You're searching in our new and faster website. [View these search results in the original Europeana.](#)

Search

Imperial Palaces of the Ming and Qing Dynasties


Iščete prek našega novega in hitrejšega spletnega mesta. [Ogled teh rezultatov iskanja v prvotnem spletnem.](#)

Results: 1


Išči

Kategorija ▾ Vrsta medija ▾ Ali lahko to ponovno uporabim? ▾ Država izvora ▾ Več filtrov


Rezultati: 2



Feilden, Bernard (37 of 43)
National Life Story
Collection: Architects' Lives
The British Library



View of the Lake at The Imperial Summer Palace, Beijing
Felice Beato
Wellcome Collection



View of the Pagoda at The Imperial Summer Palace, Beijing
Felice Beato
Wellcome Collection

Source: europeana.eu

THEMES:

Provinces and capitals,
Historical capitals,
UNESCO sites and biospheres,
Archaeological sites,
Rivers, Mountains,
Places of production,
Special terms from history,
Migration



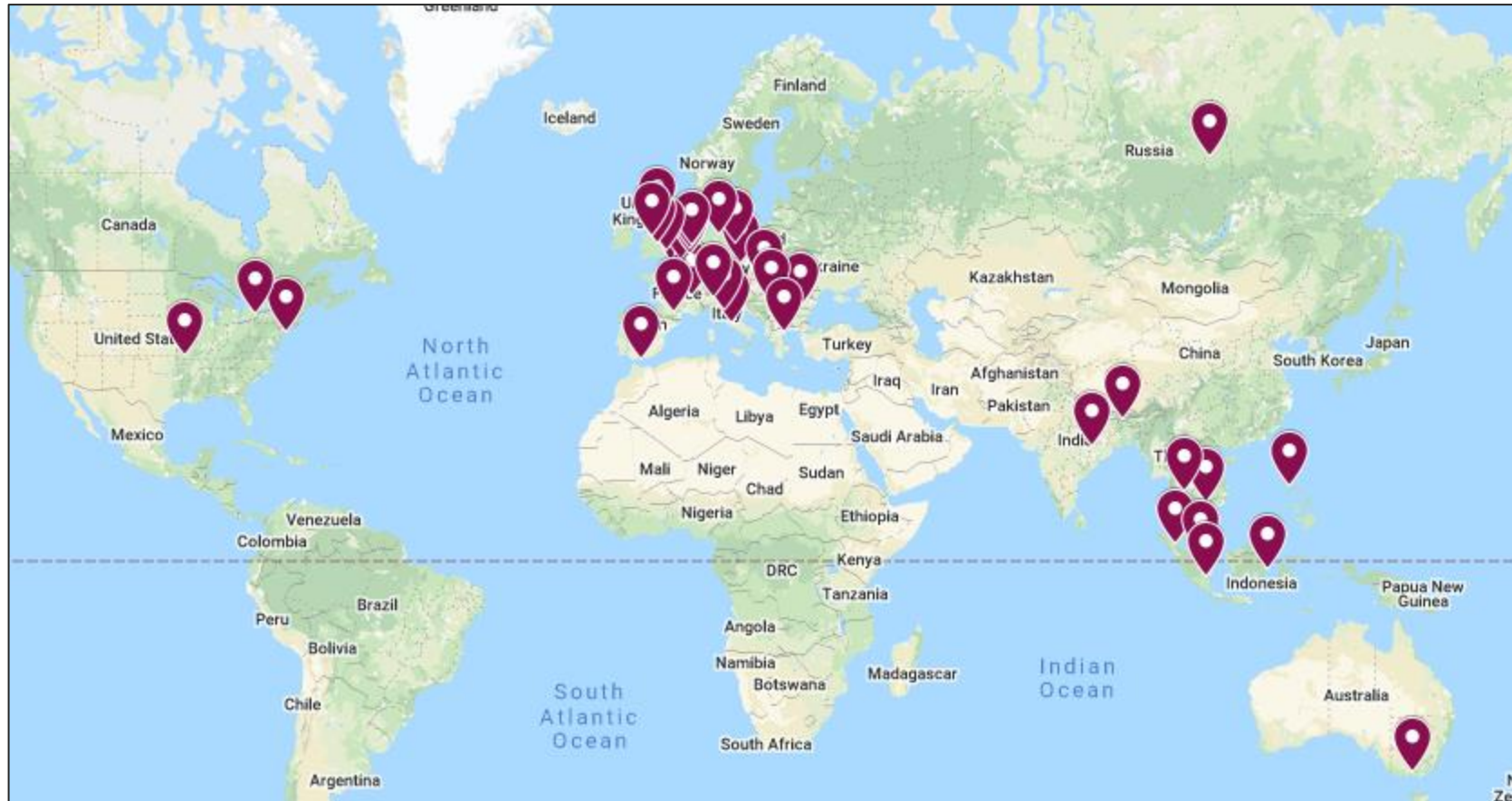
KEYWORDS:

- *ancient capital in China*
- *historical site in China*
- *UNESCO site in China*

LOCATION - MIGRATION



PAGODE – Europeana China is co-financed by the Connecting Europe Facility Programme, Grant n. INEA/CEF/ICT/A2019/1931839



Source: produced with Google Maps

KEYWORDS:

Chinese in Cambodia

Chinese in Java

Chinese in Sumatra

Chinese in Siam

Chinatown in Berlin

Chinatown in Hamburg

Chinatown in Thessaloniki

Chinatown in Prato

HISTORICAL PERIODS



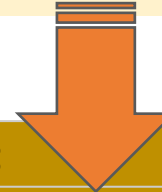
PAGODE – Europeana China is co-financed by the Connecting Europe Facility Programme, GA n. INEA/CEF/ICT/A2019/1931839

 <p>History of China</p>
ANCIENT
Neolithic c. 8500 – c. 2070 BCE
Xia c. 2070 – c. 1600 BCE
Shang c. 1600 – c. 1046 BCE
Zhou c. 1046 – 256 BCE
Western Zhou
Eastern Zhou
Spring and Autumn
Warring States

Source: Wikipedia, Europeana.eu

SUBCATEGORIES:

Historic periods,
 Historic events,
 Modern historic events,
 Neolithic cultures in China,
 Palaeolithic cultures in China



KEYWORDS:

Eastern Zhou
 Warring States
 Warring States **Period**
 Zhangguo Period
 Spring and Autumn
 Spring and Autumn **Period**
 Chunqiu Period

HISTORICAL PERIODS



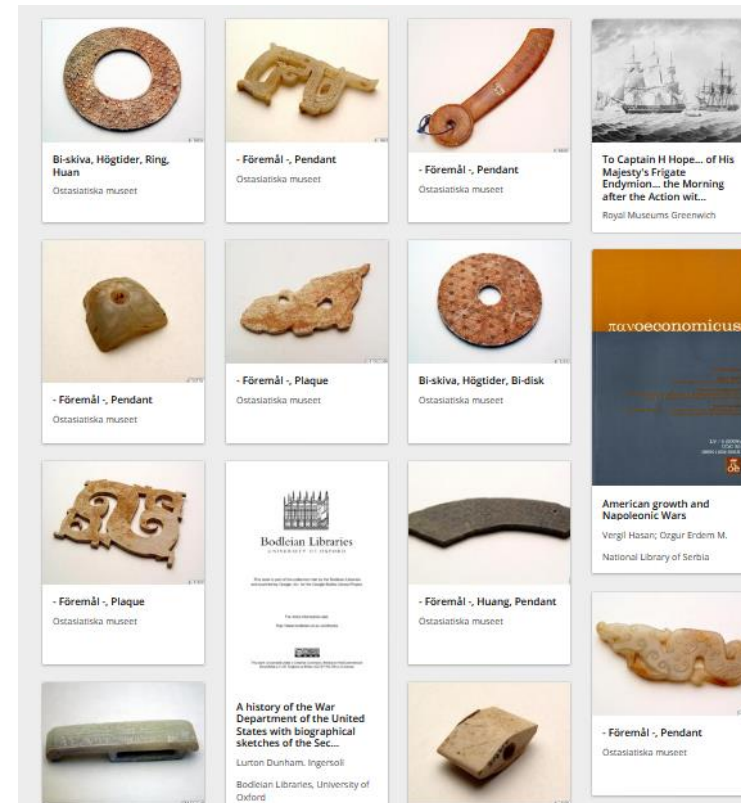
PAGODE – Europeana China is co-financed by the Connecting Europe Facility Programme, GA n. INEA/CEF/ICT/A2019/1931839

Europeana	Eastern Zhou	Spring and Autumn Period	Warring States Period
Results	49	113	431
Right results	47	19	<50
Results link	link	link	link

Spring and Autumn Period



Warring States Period



PEOPLE



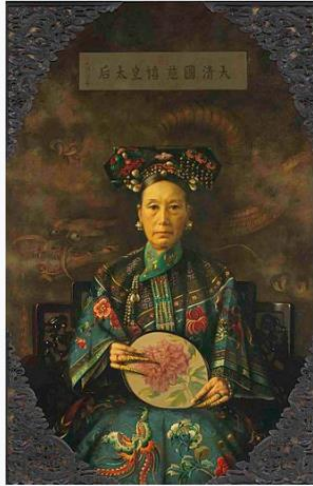
PAGODE – Europeana China is co-financed by the Connecting Europe Facility Programme, GA n. INEA/CEF/ICT/A2019/1931839

Wu Zhao
武则天



Image taken from *An 18th century album of portraits of 86 emperors of China, with Chinese historical notes*. Originally published/produced in China, 18th century. (British Library, Shelfmark Or. 2231)


Cixi



Cai Yan
蔡琰



Li Qingzhao
李清照



Statue of Li Qingzhao in the Li Qingzhao Memorial, Zhangqiu District, Jinan

Emperors,
Seal artists,
Historians,
Classical prose writers,
Classical poets,
Classical Playwrights,
Painters,
Artists,
Calligraphers,
Scholar-officials,
Eunuchs,
Collectors,
Sinologists,
Jesuits –missions,
C-pop artist,
Martial arts icons,
Other

Source: Wikipedia



Cong, Högtider, Cong
Östasiatiska museet



Uncut jade



Making a pot with the coiling technique.

In GLAMs, with special emphasis on the objects, techniques, and materials particular to China

Source	Keyword ENG	AAT search	WIKIDATA search
KIK-IRPA	sculpting technique	x	encarnación (Q5375316)
AAT	sculpting	sculpting	x
Wikidata	encarnación	encarnacione (technique)	encarnación (Q5375316)

How to optimise?

Search results for „kuan cai“ - Art & Architecture Thesaurus®:

Terms:

Coromandel lacquer (ware) ([preferred](#), [C,U,English-P,D,U,PN](#))
Coromandel lacquerware ([C,U,English,U,F,U,N](#))
 科羅曼德漆器 ([C,U,Chinese \(traditional\)-P,D,U,U](#))
 kē luó màn dé qī qì ([C,U,Chinese \(transliterated Hanyu Pinyin\)-P,U,F,U,U](#))
 ke luo man de qi qi ([C,U,Chinese \(transliterated Pinyin without tones\)-P,U,F,U,U](#))
 k'o lo man te ch'i ch'i ([C,U,Chinese \(transliterated Wade-Giles\)-P,U,F,U,U](#))
 kuancai ([C,U,Chinese \(transliterated\)-P,U,F,U,N](#))
 Coromandel-lakwerk ([C,U,Dutch-P,D,U,U](#))
 Koromandellacke ([C,U,German,D,PN](#))
 Koromandellack ([C,U,German-P,AD,SN](#))

Source	Keyword ENG	AAT search	WIKIDATA search
KIK-IRPA	braided (1)	Only „brided rugs“	braided rug (Q4955655)
AAT	braid	braid (trimming)	braid (Q320809)
AAT	trimming (cutting)	trimming (cutting)	trimming (Q1398005)
Rijksmuseum	braiding	braiding	braiding (Q43066161)

Source	Keyword ENG	AAT	AAT 2	WIKIDATA	WD 2
Professional literature	engraved polychrome	polychrome	wood engraving (process)	engraving (Q11835431)	Polychrome (Q60575492)
Professional literature	<i>kuan cai</i>	Coromandel lacquer (ware)		x	

TAKEAWAYS



- How to achieve a manageable quantity of keywords, so that mapping will be successful?
- **Our next step** should be **reducing** this one massive list **to shorter lists for particular types of object** + a few general lists
- By particular we mean identified as the most common/ important in partners' collections like Ceramics, Photography, Textile, etc.
- With general we mean Geographic References and Historic Periods
- In **PAGODE Sequel** we can broaden this methodology to other types of objects



Contact Info



PAGODE – Europeana China is co-financed by the Connecting Europe Facility Programme, GA n. INEA/CEF/ICT/A2019/1931839

Dunja Zorman, asistent researcher

Dunja.zorman@ff.uni-lj.si

Department of Asian Studies, Faculty of Arts, University of Ljubljana

<http://as.ff.uni-lj.si/english/english>

www.ff.uni-lj.si