

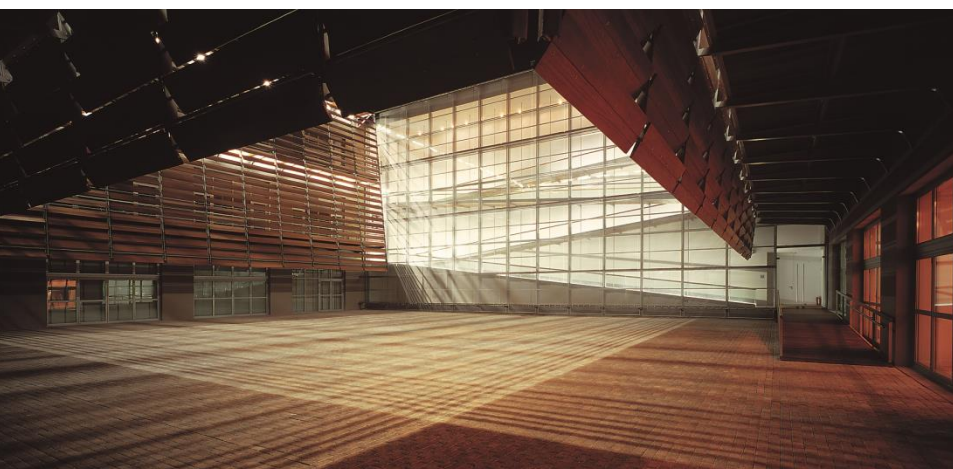


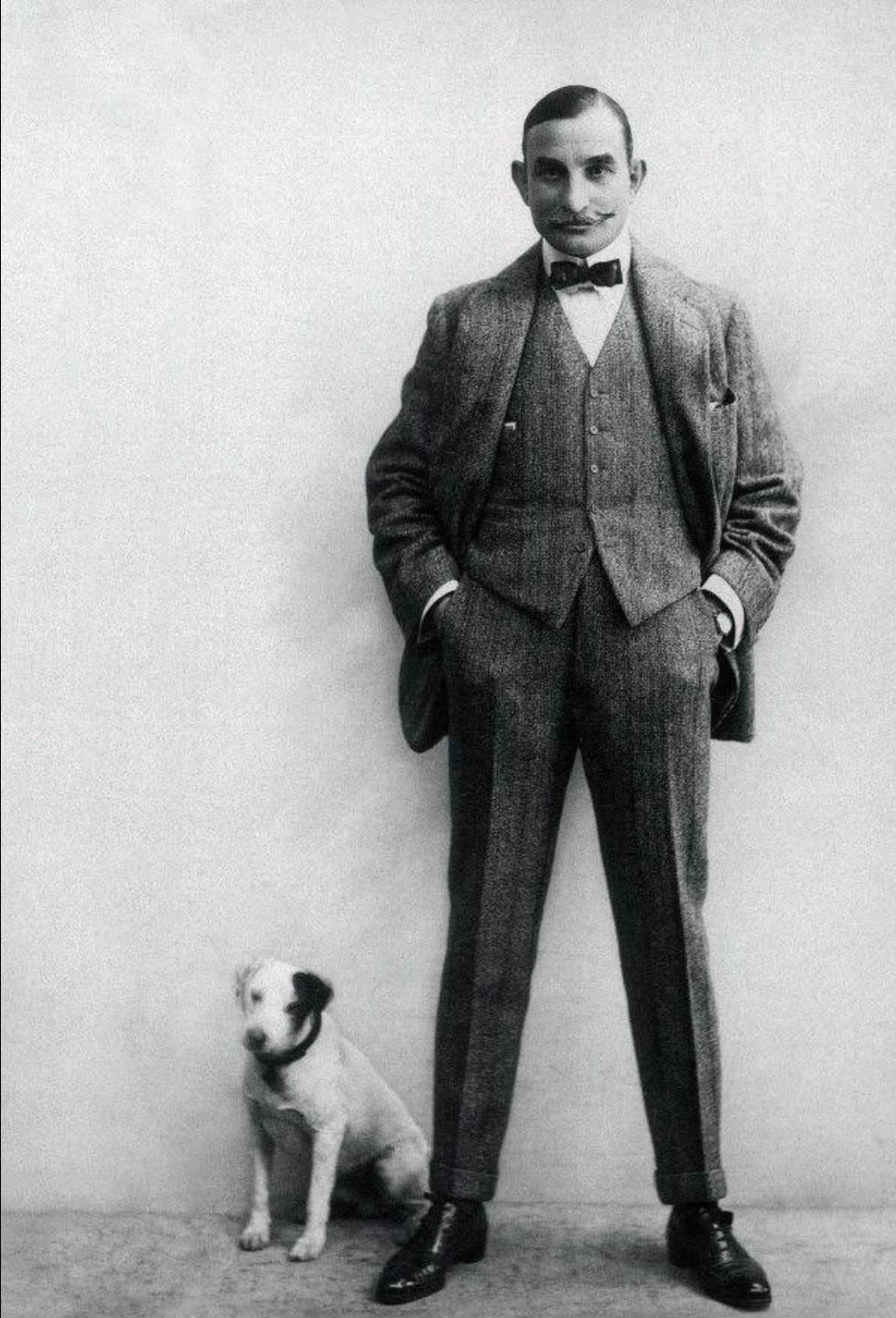
BENAKI MUSEUM



Chinese Ceramics: The View from Europe





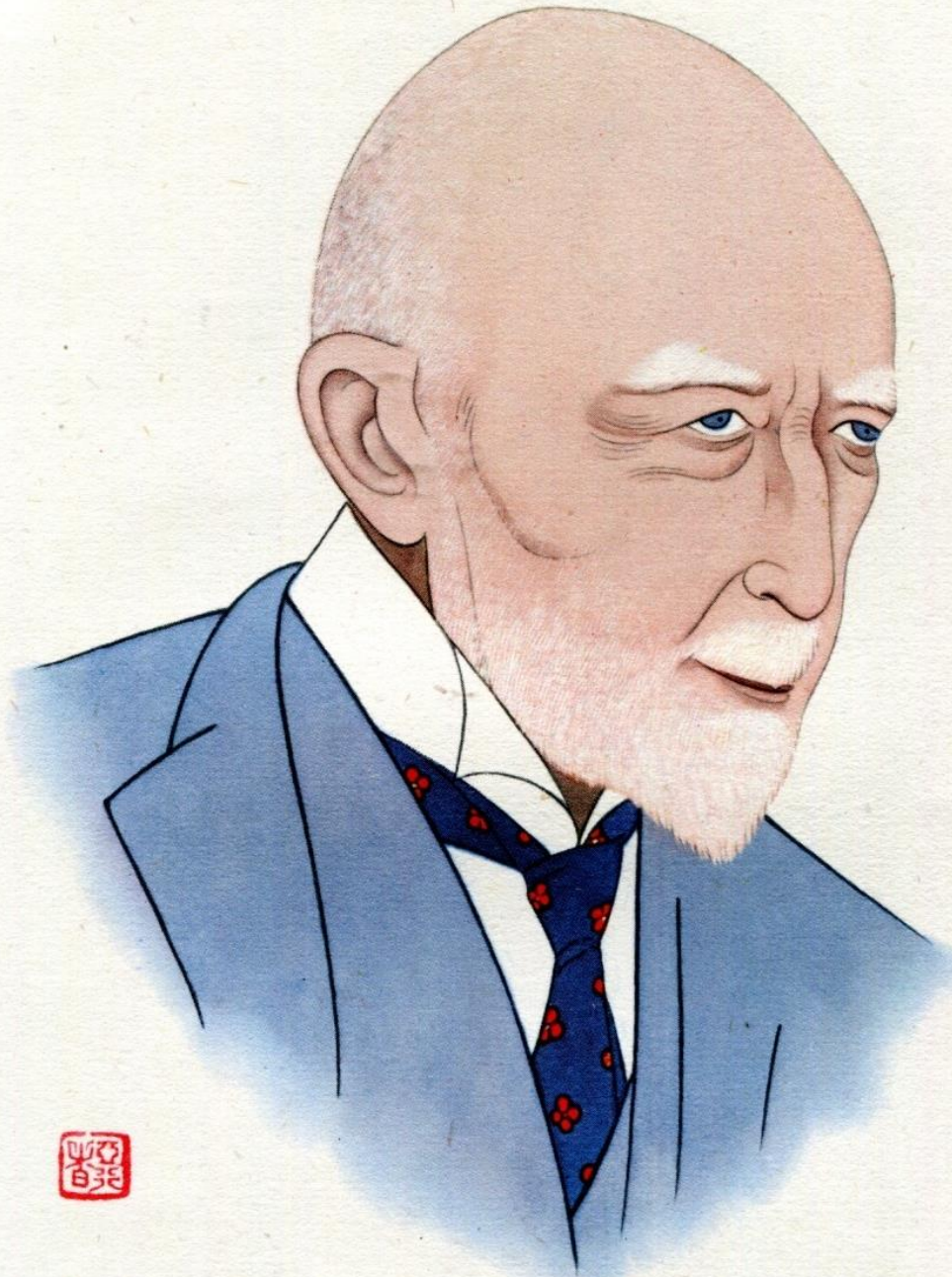


Antonis Benakis (1873-1954)

ΑΙΘΟΥΣΑ
ΕΡΓΙΟΥ ΕΥΜΟΡΦΟΠΟΥΛΟΥ



Benaki Museum, George Eumorfopoulos
Gallery, 1930s.



Chiang Yee,
Mr George
Eumorfopoulos,
in *The Silent
Traveller
in London*,
London 1938.

G. Eumorfopoulos Esq.

On loan at the Fitzwilliam Museum, Cambridge

- 1. Tall Han Green Glaze Vase, 15".
- 2. " " " " Cock.
- 3. " " " " Farm house.
- 4. Wei Pottery Vase, Painted deco.
- 5. Tall Wei Pottery Figure, 15½"
- 6. Small " " " " 7½"
- 7. Tall Tang " " Horse, 23"
- 8. " " " " Camel, 20½"
- 9. Small " " " " Horse & Rider, 17"
- 10. " " " " " " 14½"
- 11. Tall " " " " Priest Figure, 18"
- 12. Small " " " " Figure 15"
- 13. " " " " " " Lady 9"
- 14. " " " " " " " " 8½"
- 15. 3 legged " " " " Plate 7½"
- 16. " " " " " " " " 7"
- 17. Green, Yellow, Cream, Saucer Plate 6¼"
- 18. " " " " " " Pottery Bowl & Cover.
- 19. " " " " " " Cup.
- 20. " " " " " " Glaze Tripod Bowl.
- 21. " " " " " " Mottled Glaze Tang Jar, 2 handles, 7".
- 22. " " " " " " Mottled Glaze Tang Jar, 2 handles, 7"
- 23. White Glaze Tang Jar & Cover, 7½"
- 24. Brown with Black Splash Tang Pilgrim bottle, 10".
- 25. Marble Glaze Tang Jar.
- 26. Green, yellow & Cream, Tang Pillow, 5".
- 27. Sung Chun purple splashed Bowl with Sagger.
- 28. " " " " " " metal rim.
- 29. Yuan " " " " Blue Bowl, 9".
- 30. " " " " " " purple splash stem cup.
- 31. " " " " Sung Blue Purple splashed, 2 handles Jar with wood stand and cover.
- 32. Sung Blue Purple Splash Plate, 9".
- 33. " " " " Celadon Bowl, Incised design 7½"
- 34. " " " " " " " " 5½"
- 35. " " " " Lungchuan Celadon Lotus Bowl 5½"
- 36. " " " " Pale Celadon, small Bowl 4"
- 37. " " " " Ying Ching fluted Bowl, 4½"
- 38. " " " " " " small Saucer 4"
- 39. " " " " " " Bowl, 6½"
- 40. " " " " Painted Tall Tzu Chow Bottle, 15½"
- 41. " " " " Carved Tzu Chou Jar with wood stand 11½"
- 42. " " " " Painted Tzu Chou Vase, 11"
- 43. " " " " " " Pillow.

- 44. Sung Painted Tzu Chou small Vase 5½"
- 45. " " " " Jar 3½"
- 46. " " " " Incised " " Bottle Vase 10".
- 47. " " " " " " " " Lamp, 5½"
- 48. " " " " Temoku BottleVase, 10½"
- 49. " " " " " " Jar, 3¼"
- 50. " " " " " " 2 handled Vase, 6"
- 51. " " " " " " Bowl, 5"
- 52. " " " " " " " " 4"
- 53. " " " " Ting Chou Plate, Raised Deco, 6½"
- 54. " " " " " " Bowl. 7"
- 55. " " " " " " Dish, Incised, 8½"
- 56. " " " " " " Bowl, 8½"
- 57. " " " " " " Small Bowl 3½"
- 58. " " " " Pale Celadon Vase, Raised Deco, 10¼"
- 59. " " " " " " " " 11½"
- 60. " " " " Cream Crackle Vase, 15"
- 61. " " " " " " Glaze 11½"
- 62. " " " " " " 2 handles, 9½"
- 63. " " " " Cream Glaze Vase, 2 handles, 9½"
- 64. " " " " " " Wine Pot, 11"
- 65. " " " " " " " " 8"
- 66. Ming Celadon Vase, Raised Deco 7".
- 67. " " " " " " small Vase, 2 handles, 5½"
- 68. " " " " Brown Glaze White slip Jar, with wood cover.
- 69. " " " " Tzu Chou Blue Glaze Vase 9½"
- 70. *Ming Kanghe* Maz Blue Ginger Jar, White slip 5".
- 71. *Kanghe* F'Verte Plate, Bird & Kylin deco, 10¼"
- 72. " " " " " " Dragon, 10½"
- 73. Ming colored Plate Temple with Horses & Riders. Floral Border 8½"
- 74. Kanghe F'Verte Bowl, Floral centre utensil & Floral Panels, 10½"
- 75. " " " " Plaque, Figures one side reverse Scenery.
- 76. " " " " Table Screen Floral reverse, Figures on Terrace.
- 77. Ming coloured Wine Pot, Dragon & Waves (Bamboo handle) 5"
- 78. " " " " Pottery Vase, Turquoise & Aubergine, with 2 handles 12½"
- 79. " " " " 5 col Jar, Ladies with Children.w/wood cover, 9½" (Floral).
- 80. " " " " coloured small Jar (Figures on Terrace) with wood stand 4½"
- 81. " " " " Square " Red Dragons, with wood cover 5½"
- 82. " " " " " " Dish, Floral Centre, Dragon Reserves Border 6½"
- 83. " " " " Winepot (Heart shaped Panels Dragons) with cover 10"
- 84. " " " " Biscuit Shrine, Turquoise & Dark Blue (Figure with Tortoise) 13".
- 85. " " " " Blanc de chine Buddha, 7"
- 86. " " " " Goddess, Clapping knee, 6½"



ΚΕΡΑΜΙΚΗ ΑΠΟ ΤΗΝ ΚΙΝΑ

CERAMICS FROM CHINA



ΜΟΥΣΕΙΟ ΜΠΕΝΑΚΗ
BENAKI MUSEUM

08.06 - 04.09.2016

HASHTAG ΕΚΘΕΣΗΣ #CeramicsFromChinaBM
@TheBenakiMuseum FIND US

ΧΟΡΗΓΟΙ / SPONSORS



ΕΛΛΗΝΙΚΗ ΔΗΜΟΚΡΑΤΙΑ
Υπουργείο Πολιτισμού και Τουρισμού

Bonhams



LASCARIS
foundation



HUAWEI

ΛΑΣΚΑΡΙΝΑ ΚΑΡΑΣΤΑΜΑΤΗ

ΥΠΕΥΘΥΝΟΙ / SUPPORTER



ΔΕΛΤΑ
2016

ΧΟΡΗΓΟΣ ΕΠΙΚΟΙΝΩΝΙΑΣ ΕΚΘΕΣΗΣ / EXHIBITION COMMUNICATION SPONSOR

Η ΚΑΘΗΜΕΡΙΝΗ

ΝΑΥΤΙΚΑ ΧΡΟΝΙΚΑ

ΜΟΝΙΜΟΙ ΧΟΡΗΓΟΙ ΕΠΙΚΟΙΝΩΝΙΑΣ ΜΟΥΣΕΙΟΥ ΜΠΕΝΑΚΗ / BENAKI MUSEUM PERMANENT COMMUNICATION SPONSORS





Large dish. Porcelain painted in underglaze blue with a double-headed eagle set in a heart pierced by arrows and crowned by a 'crown' of flowers within borders of symbols, 'towns' and flowers. China, Jiangxi province, Jingdezhen. Ming dynasty, Wanli period, *circa* 1600. Diameter 50.7 cm. Donated by Ioannes Doukas (11254).



Bowl. Porcelain decorated in *famille verte* enamels with peony basket, symbols, flowering plant pots and phoenices. Flower mark within a double circle in underglaze blue on the base. Incised mark of the Augustus II the Strong collection in Dresden: N=32 I. China, Jiangxi province, Jingdezhen. Kangxi period, AD 1662-1722. Diameter 20.4 cm. Donated by George Eumorfopoulos (2697).



Schloss Charlottenburg, Berlin



Cup with handle. Porcelain with relief and *famille rose* enamel decoration of flowers and heraldry symbols for the Spanish market. Coat of arms of Cayetano Pignatelli, Marquis of Rubí. China, Jiangxi province, Jingdezhen. Qianlong period (AD 1736-1795), circa 1769. Width 11 cm. Donated by George Eumorfopoulos (2886).



Bowl. Porcelain with *famille rose* enamel decoration of vine scroll, leaves, two figures (Freedom and Justice) and a pseudo-armorial based on the arms of the State of New York with initials in lieu of the rising sun, for the United States of America market. On ribbon under the coat of arms in *famille rose* enamels the motto EXCELSIOR.

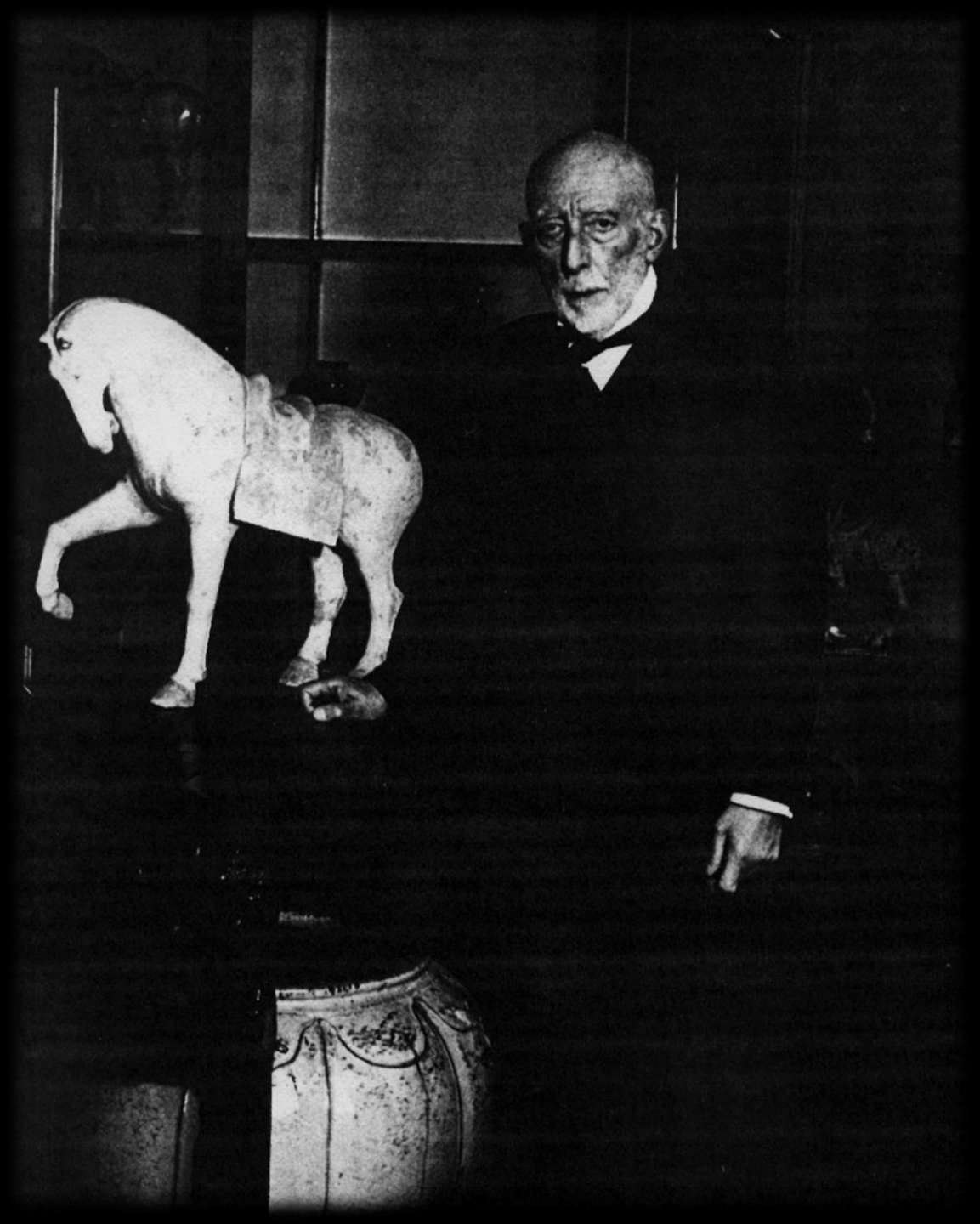
China, Jiangxi province, Jingdezhen. Qing dynasty, *circa* AD 1795. Diameter 11.1 cm. Donated by George Eumorfopoulos (2884a).

Vase with lid. Porcelain painted with scrolls, antiquities and trees in bloom in underglaze cobalt blue. China, Jiangxi province, Jingdezhen. Kangxi period, AD 1662-1722. Height 21 cm. Donated by George Eumorfopoulos (2628).



'It was in 1906 that I saw for the first time a few specimens of the tomb wares, and I was at once attracted by them. Archaeological appeal alone, however, has never induced me to acquire an object: to enter my collection it was indispensable that it should at the same time appeal to me aesthetically in some way or another.'

George Eumorfopoulos, 'Preface,' in R.L. Hobson, *The George Eumorfopoulos Collection* [...], Volume One, London 1925, v-viii.



Dish. Ivory glazed
Ding stoneware with
carved lotus plant
decoration. Rim
bound in metal ring.
China, Hebei
province, Quyang
county, Jiancicun.
Northern Song
dynasty. Diameter
20.7 cm. Donated by
George
Eumorfopoulos
(2371).



A

B

A



B



Zun-shaped flower pot.
Blue glazed on the interior and purple glazed on the exterior
Jun stoneware. One character inscription ('nine' numeral, *jiu*)
incised on the base.
China, Henan province, Yuzhou. Yuan or early Ming dynasty.
Diameter 16.2 cm.
Donated by George Eumorfopoulos (2325).



Bowl. Black and brown glazed Jian stoneware. Metal-bound rim. China, Fujian province, Jianyang county, Shuiji. Northern Song - Southern Song dynasties, AD 12th c. Diameter 11.9 cm. Donated by George Eumoropoulos (2430).



A



B

Bowl. Greenish-blue (*céladon*) glazed Longquan stoneware. Kiln reject restored using gold lacquer (probably in Japan, *kinnaoshi*). China, Zhejiang province, Longquan. Southern Song dynasty. Diameter 14.7 cm. Donated by George Eumorfopoulos (2391).



Jar with two handles. Cizhou-type stoneware with black glaze on the outside over groups of ribs and brown glaze both outside and inside under the black one. China, probably Henan province or possibly Hebei province. Jin dynasty. Height 14.3 cm. Donated by George Eumorfopoulos (2439).



Charles and Nell Vyse (1882-1971 and 1892-1967), Bottle, glazed stoneware, height 18 cm, incised inscription on the base: CV / 1933, London, 1933, private collection, Athens.



Figure of a camel.
Earthenware with
straw glaze and 'cold
painted' decoration.
Height 35.5 cm.
China, Hebei or Henan
province. Sui or early
Tang dynasties.
Donated by George
Eumorfopoulos in
1936 (2186).



Figure of a lady. Painted earthenware. China. Tang dynasty, AD 8th c. Height 37.2 cm. Donated by George Eumorfopoulos (2195).

A



B



Figure of a dancer with curly hair, probably a South or SE Asian boy. Polychrome painted earthenware. China. Tang dynasty, AD mid-7th to mid-8th c. Height 34 cm. Donated by George Eumorfopoulos (2190).



Tomb vessel. Painted earthenware. China, Gansu province. Neolithic period, Gansu culture, Banshan phase, mid-3rd millennium BC. Height 33.5 cm. Donated by George Eumorfopoulos (2116).





Thank you

